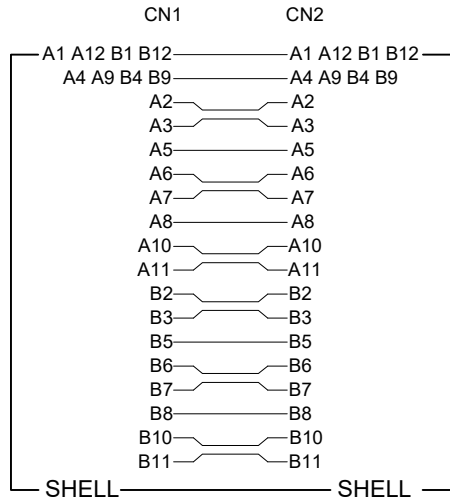
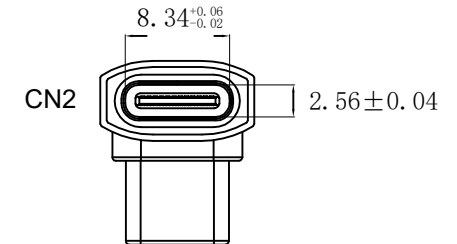
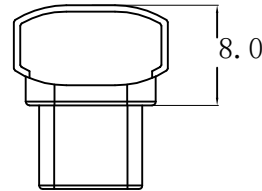
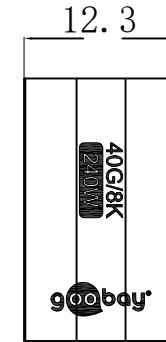
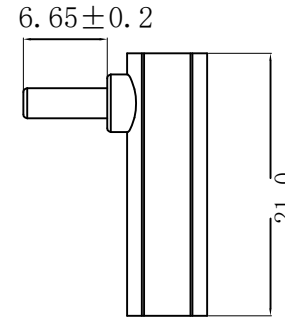
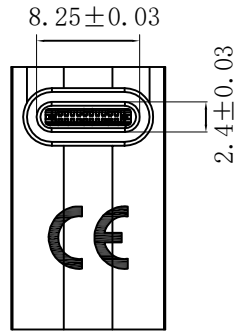


PIN-Belegung / PIN Assignment



CN1



USB-C™-Adapter vertikal 90° kurz, USB4™

- Sorgt für eine platzsparende Kabelführung
- Hochwertiges, robustes Metallgehäuse
- Kompatibel mit USB 3.1, USB 2.0, Thunderbolt™ 3 und Thunderbolt™ 4

Anschlüsse: USB-C™-Buchse, USB-C™-Stecker
Kontakte: vernickelt
Material Gehäuse: Innen: PVC 45P, schwarz
 Außen: Aluminiumlegierung
Max. Auflösung: 8K @ 60 Hz
Max. Datenübertragungsrate: 40 Gbit/s
Leistung: Max. 240 W (48 V ; 5A)
Isolationswiderstand: 300 V/10ms ===, ≥10 MΩ

USB-C™ Adapter Vertical 90° Short, USB4™

- Ensures space-saving cable routing
- High-quality, robust metal housing
- Compatible with USB 3.1, USB 2.0 as well as Thunderbolt™ 3 and Thunderbolt™ 4

Connectors: USB-C™ socket
Contacts: USB-C™ plug nickel-plated
Material housing: Inside: PVC 45P, black
 Outside: Aluminium alloy
Max. resolution: 8K @ 60 Hz
Max. data transmission rate: 40 Gbit/s
Power: Max. 240 W (48 V ; 5A)
Insulation resistance: 300 V/10ms ===, ≥10 MΩ

Änderungen

Datum	Name	gez.:	Datum	Name
		gez.:	25.07.2024	alw
		gepr.:	25.07.2024	alw
		Norm:		
Änderungen vorbehalten / Subject to change				

Bezeichnung
**USB-C 4.0 240W 40G 90°
 Adapter Breit Lang F-M**



Zeichnungs-Nr.:
74442

Blatt
1/1

von