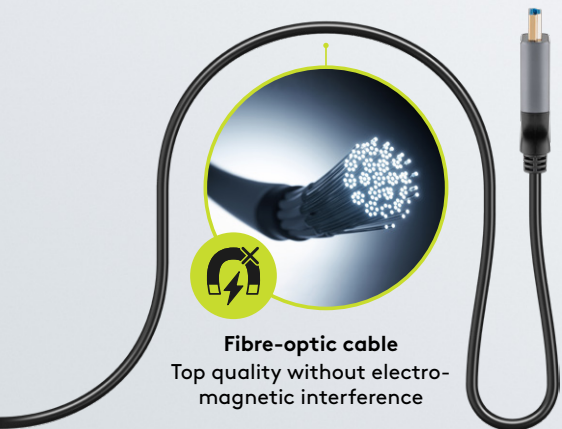
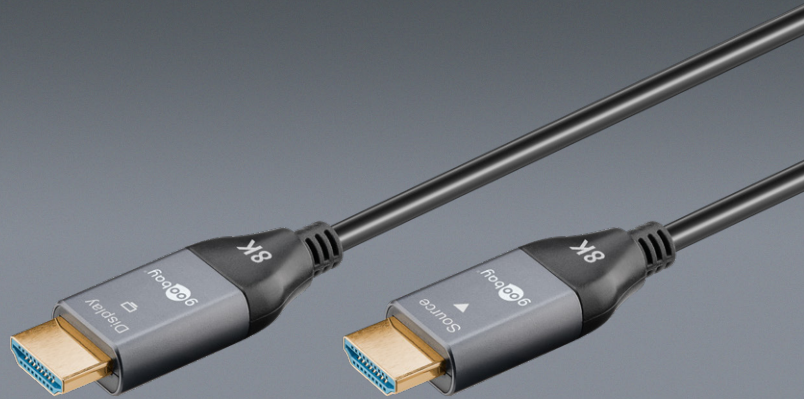


# PRODUCT NEWS APRIL

# Optical Hybrid Ultra High Speed HDMI™ Cable with Ethernet (AOC)

8K/60Hz



## Features

Supports high-resolution UHD signal transmission with up to 8K @ 60 Hz (4320p), a max. transmission rate of up to 48 Gbit/s and all common features such as ARC (Audio Return Channel), HDCP or 4K content with 3D

8K AOC cable (Active Optical Cable) with HDMI™ connectors and a hybrid fibre-optic copper conductor for interference-free transmissions

Thanks to AOC technology, the cable bridges long cable runs without loss and achieves high data rates without amplification

The fibre-optic cable converts electrical data signals into optical and back into electrical signals at the end of the cable (unidirectional)

The slim, robust metal plugs with bend protection are especially convenient for confined spaces

The Ultra High Speed HDMI™ cable links TVs and monitors with game consoles such as PlayStation 5 or Xbox Series X, as well as projectors and streaming receivers e.g. Amazon Fire TV or Apple TV

Fibreglass material makes the cable highly flexible, offering a very small bending radius



Availability	Cable length	Item no.	EAN	RRP	Pcs./master carton	Pcs./PU	Length	Width	Height	Weight
● exp. from WEEK 19	10.00 m	76274	4040849762741	39.99 €	10	1	17.50 cm	15.50 cm	5.50 cm	0.331 kg
● exp. from WEEK 19	20.00 m	76275	4040849762758	49.99 €	10	1	18.00 cm	17.50 cm	7.50 cm	0.598 kg
● exp. from WEEK 19	30.00 m	76276	4040849762765	59.99 €	10	1	21.50 cm	21.00 cm	7.00 cm	0.852 kg
● exp. from WEEK 19	40.00 m	76277	4040849762772	69.99 €	6	1	21.50 cm	20.50 cm	7.00 cm	1.292 kg
● exp. from WEEK 19	50.00 m	76278	4040849762789	89.99 €	6	1	22.00 cm	20.50 cm	7.00 cm	1.535 kg

# DisplayPort™ Cable 2.0/2.1



## Features

Flexible premium cable with slim metal connectors, bend protection and colour-coordinated textile cable

The braided textile sheath of the monitor cable is pleasant to the touch and gentle on sensitive surfaces

The DisplayPort™ cable transmits high-resolution video signals and HD audio signals, e.g. from a computer or laptop to a screen or projector

The cable supports ultrawide transfers and the transmission of separate video signals to multiple monitors via a single DisplayPort™ cable (daisy-chaining)

The cable supports FreeSync and G-Sync, HDCP 2.2, Dynamic HDR as well as 32 audio channels and many popular audio formats, e.g. DTS-HD Master Audio

Version	DisplayPort™ 2.0/2.1	
	Ultra High Bit Rate 13.5 UHBR13.5, DP54 cable	Ultra High Bit Rate 20 UHBR20, DP80 cable
max. speed	52.22 Gbit/s (54 Gbit/s)	77.37 Gbit/s (80 Gbit/s)
max. resolution	8K/60Hz 4K/240Hz	10K/60Hz 8K/60Hz 4K/240Hz
max. resolution (DSC)	8K/144Hz DSC 4K/240Hz DSC	16K/60Hz DSC 8K/240Hz DSC

## DisplayPort™ Cable 2.0/2.1, 54 Gbit/s, 8K/144Hz DSC

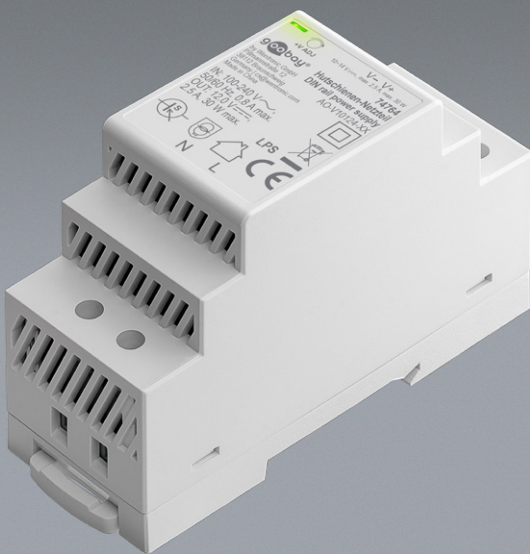
Availability	Cable length	Item no.	EAN	RRP	Pcs./master carton	Pcs./PU	Length	Width	Height	Weight
● exp. from WEEK 17	1.00 m	75679	4040849756795	11.99 €	140	1	16.00 cm	18.00 cm	1.90 cm	0.068 kg
● exp. from WEEK 17	2.00 m	75680	4040849756801	12.99 €	90	1	16.00 cm	18.00 cm	2.10 cm	0.102 kg
● exp. from WEEK 17	3.00 m	75681	4040849756818	14.99 €	20	1	22.50 cm	19.00 cm	2.40 cm	0.230 kg

## DisplayPort™ Cable 2.0/2.1, 80 Gbit/s, 16K/60Hz DSC

Availability	Cable length	Item no.	EAN	RRP	Pcs./master carton	Pcs./PU	Length	Width	Height	Weight
● exp. from WEEK 17	1.00 m	75684	4040849756849	12.99 €	140	1	16.00 cm	18.00 cm	1.90 cm	0.068 kg
● exp. from WEEK 17	2.00 m	75685	4040849756856	14.99 €	90	1	16.00 cm	18.00 cm	2.10 cm	0.102 kg
● exp. from WEEK 17	3.00 m	75686	4040849756863	16.99 €	20	1	22.50 cm	19.00 cm	2.40 cm	0.230 kg

# DIN Rail Power Supply 12 V (DC), 2.5 A, 30 W

suitable for DIN mounting, TH 35/7.5 or TH 35/15



## Features

The 12 V power supply is suitable for use as a doorbell transformer, for operating surveillance and access systems, door openers, door intercoms, bell systems, etc.

35.2 mm wide, it is particularly compact and can be quickly and easily mounted on a DIN rail with a top-hat profile, e.g. in a control cabinet, using a click system

The DIN rail transformer converts the input voltage in the range of 100-240 V (AC) at 50/60 Hz to 12 V constant DC voltage

Features a variable DC output voltage of 10-14 V and high efficiency

The switch-mode power supply is particularly safe thanks to over-voltage, overload and short-circuit protection, IP20 protection and safe electronic separation according to protection class II

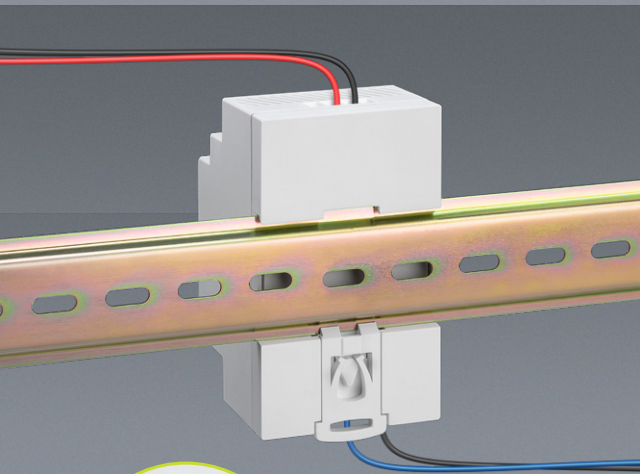
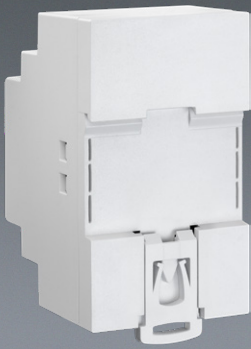
The 230 V to 12 V transformer is passively cooled by convection and connected via touch-protected screw terminals

With integrated LED display that glows permanently when the power supply is in operation and working properly

Availability	Item no.	EAN	RRP	Pcs./master carton	Pcs./PU	Length	Width	Height	Weight
● exp. from WEEK 26	74764	4040849747649	21.99 €	50	1	10.00 cm	6.00 cm	6.80 cm	0.120 kg

# DIN Rail Power Supply 12 V (DC), 4.5 A, 54 W

suitable for DIN mounting, TH 35/7.5 or TH 35/15



## Features

The 12 V power supply is suitable for building automation, e.g. for complex door intercom systems, LED, lighting, surveillance and alarm systems

Can be quickly and easily mounted on a DIN rail with a top-hat profile, e.g. in a control cabinet, using a click system

The DIN rail transformer converts input voltages in the range of 100-240 V (AC) to 12 V constant DC voltage, which can be tapped via two DC outputs

Features a variable DC output voltage of 10-14 V and high efficiency

The switch-mode power supply is particularly safe thanks to over-voltage, overload and short-circuit protection, IP20 protection and safe electronic separation according to protection class II

The 230 V to 12 V transformer is passively cooled by convection and connected via touch-protected screw terminals

With integrated LED display that glows permanently when the power supply is in operation and working properly



### With click-in system

Mount the power supply to the top of the rail and press it down

Availability	Item no.	EAN	RRP	Pcs./master carton	Pcs./PU	Length	Width	Height	Weight
● exp. from WEEK 26	74766	4040849747663	34.99 €	50	1	10.00 cm	7.50 cm	6.50 cm	0.200 kg

# DIN Rail Power Supply 24 V (DC), 1.5 A, 36 W

suitable for DIN mounting, TH 35/7.5 or TH 35/15



## Features

The 24 V power supply is suitable for control systems such as door-bell systems, networked lighting, heating or ventilation and for operating surveillance and alarm systems

35.2 mm wide, it is particularly compact and can be quickly and easily mounted on a DIN rail with a top-hat profile, e.g. in a control cabinet, using a click system

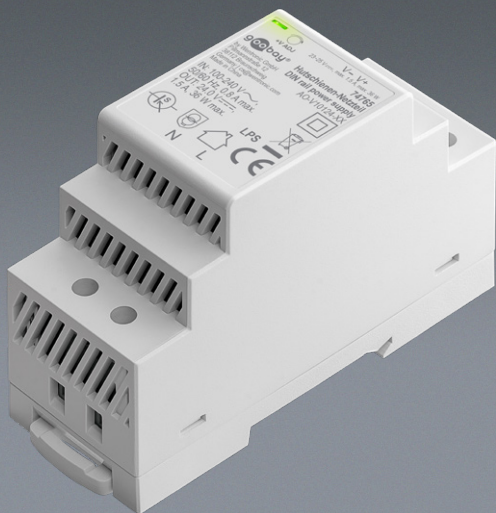
The DIN rail transformer converts the input voltage in the range of 100-240 V (AC) at 50/60 Hz to 24 V constant DC voltage

Features a variable DC output voltage of 10-14 V and high efficiency

The switch-mode power supply is particularly safe thanks to over-voltage, overload and short-circuit protection, IP20 protection and safe electronic separation according to protection class II

The 230 V to 24 V transformer is passively cooled by convection and connected via touch-protected screw terminals

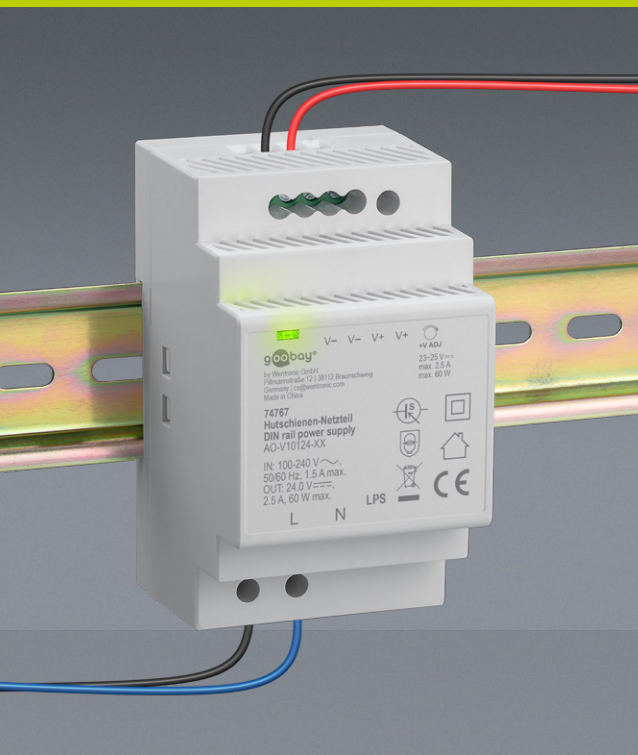
With integrated LED display that glows permanently when the power supply is in operation and working properly



Availability	Item no.	EAN	RRP	Pcs./master carton	Pcs./PU	Length	Width	Height	Weight
● exp. from WEEK 26	74765	4040849747656	21.99 €	50	1	10.00 cm	6.00 cm	6.80 cm	0.120 kg

# DIN Rail Power Supply 24 V (DC), 2.5 A, 60 W

suitable for DIN mounting, TH 35/7.5 or TH 35/15



## Features

The 24 V power supply is suitable for high-performance systems that supply multiple devices, such as those used in industrial automation or complex lighting, monitoring and alarm systems

Can be quickly and easily mounted on a DIN rail with a top-hat profile, e.g. in a control cabinet, using a click system

The DIN rail transformer converts input voltages in the range of 100-240 V (AC) to 24 V constant DC voltage, which can be tapped via two DC outputs

Features a variable DC output voltage of 10-14 V and high efficiency

The switch-mode power supply is particularly safe thanks to over-voltage, overload and short-circuit protection, IP20 protection and safe electronic separation according to protection class II

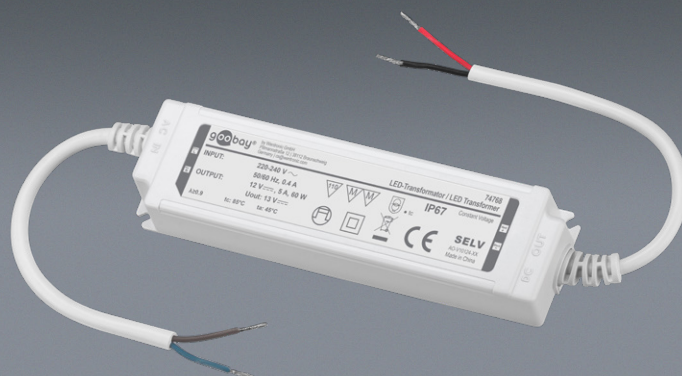
The 230 V to 24 V transformer is passively cooled by convection and connected via touch-protected screw terminals

With integrated LED display that glows permanently when the power supply is in operation and working properly

Availability	Item no.	EAN	RRP	Pcs./master carton	Pcs./PU	Length	Width	Height	Weight
● exp. from WEEK 26	74767	4040849747670	34.99 €	50	1	10.00 cm	7.50 cm	6.50 cm	0.200 kg

# LED Transformer 12 V (DC), 60 W, IP67

constant voltage transformer (CV) for outdoor use, not dimmable



## Features

Robust LED transformer without minimum load for connecting lamps such as G4 or GU-5.3 LED spots, LED strips and LED modules to the 220-240 V (AC) power grid

The constant voltage of 12 V (DC) allows for the flexible addition and removal of individual LEDs in parallel circuits and variable lengths of LED strips

With an IP67 rating, the LED driver is perfect for outdoor use, e.g. for outdoor lighting, surveillance systems, humid rooms such as bathrooms or kitchens and industrial humid rooms

Ideal for powering multiple LEDs or LED strips simultaneously with a total output of up to 60 W

Input and output of the 12 V LED transformer each with 20 cm loose cable ends (2-pole) for easier installation

The LED driver 12 V is particularly safe due to overvoltage and short-circuit protection as well as electronic separation according to protection class II

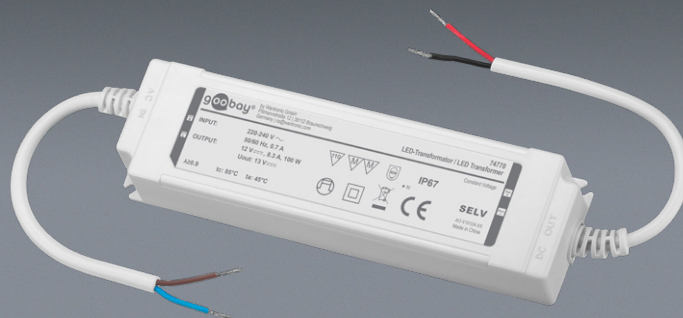
Dimensions (L x W x H): 166 x 43 x 33 mm, Note: The LED transformer is not dimmable

Availability	Item no.	EAN	RRP	Pcs./master carton	Pcs./PU	Length	Width	Height	Weight
● exp. from WEEK 26	74768	4040849747687	29.99 €	50	1	23.50 cm	5.50 cm	5.50 cm	0.400 kg



# LED Transformer 12 V (DC), 100 W, IP67

constant voltage transformer (CV) for outdoor use,  
not dimmable



## Features

Robust LED transformer without minimum load for connecting lamps such as G4 or GU-5.3 LED spots, LED strips and LED modules to the 220-240 V (AC) power grid

The constant voltage of 12 V (DC) allows for the flexible addition and removal of individual LEDs in parallel circuits and variable lengths of LED strips

With an IP67 rating, the LED driver is perfect for outdoor use, e.g. for outdoor lighting, surveillance systems, humid rooms such as bathrooms or kitchens and industrial humid rooms

Ideal for powering multiple LEDs or LED strips simultaneously with a total output of up to 100 W

Input and output of the 12 V LED transformer each with 20 cm loose cable ends (2-pole) for easier installation

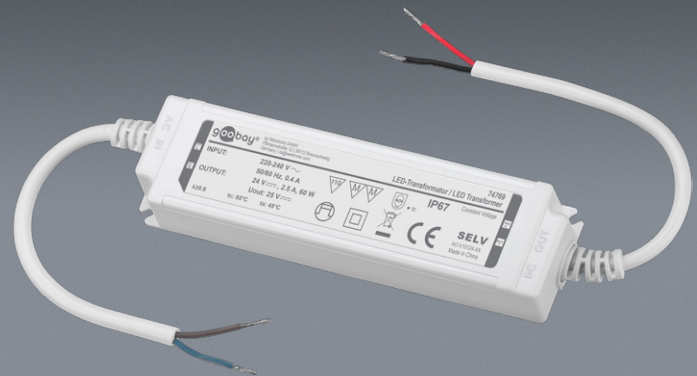
The LED driver 12 V is particularly safe due to overvoltage and short-circuit protection as well as electronic separation according to protection class II

Dimensions (L x W x H): 193 x 52 x 37 mm, Note: The LED transformer is not dimmable

Availability	Item no.	EAN	RRP	Pcs./master carton	Pcs./PU	Length	Width	Height	Weight
● exp. from WEEK 26	74770	4040849747700	39.99 €	20	1	26.00 cm	6.00 cm	6.00 cm	0.600 kg

# LED Transformer 24 V (DC), 60 W, IP67

constant voltage transformer (CV) for outdoor use,  
not dimmable



## Features

Robust LED transformer without minimum load for connecting lamps such as G4 or GU-5.3 LED spots, LED strips and LED modules to the 220-240 V (AC) power grid

The constant voltage of 24 V (DC) allows for the flexible addition and removal of individual LEDs in parallel circuits and variable lengths of LED strips

With an IP67 rating, the LED driver is perfect for outdoor use, e.g. for outdoor lighting, surveillance systems, humid rooms such as bathrooms or kitchens and industrial humid rooms

Ideal for providing a stable power supply over longer cable distances and for long or high-performance LED strips with a total output of up to 60 W

Input and output of the 24 V LED transformer each with 20 cm loose cable ends (2-pole) for easier installation

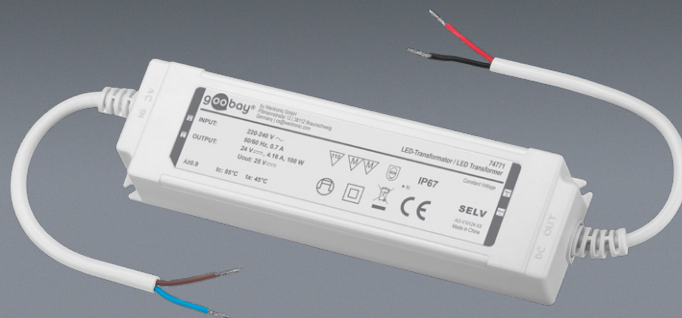
The 24 V LED driver is particularly safe due to overvoltage and short-circuit protection as well as electronic separation according to protection class II

Dimensions (L x W x H): 166 x 43 x 33 mm, Note: The LED transformer is not dimmable

Availability	Item no.	EAN	RRP	Pcs./master carton	Pcs./PU	Length	Width	Height	Weight
● exp. from WEEK 26	74769	4040849747687	29.99 €	50	1	23.50 cm	5.50 cm	5.50 cm	0.400 kg

# LED Transformer 24 V (DC), 100 W, IP67

constant voltage transformer (CV) for outdoor use, not dimmable



## Features

Robust LED transformer without minimum load for connecting lamps such as G4 or GU-5.3 LED spots, LED strips and LED modules to the 220-240 V (AC) power grid

The constant voltage of 24 V (DC) allows for the flexible addition and removal of individual LEDs in parallel circuits and variable lengths of LED strips

With an IP67 rating, the LED driver is perfect for outdoor use, e.g. for outdoor lighting, surveillance systems, humid rooms such as bathrooms or kitchens and industrial humid rooms

Ideal for providing a stable power supply over longer cable distances and for long or high-performance LED strips with a total output of up to 100 W

Input and output of the 24 V LED transformer each with 20 cm loose cable ends (2-pole) for easier installation

The 24 V LED driver is particularly safe due to overvoltage and short-circuit protection as well as electronic separation according to protection class II

Dimensions (L x W x H): 193 x 52 x 37 mm, Note: The LED transformer is not dimmable

Availability	Item no.	EAN	RRP	Pcs./master carton	Pcs./PU	Length	Width	Height	Weight
● exp. from WEEK 26	74771	4040849747717	39.99 €	20	1	26.00 cm	6.00 cm	6.00 cm	0.600 kg