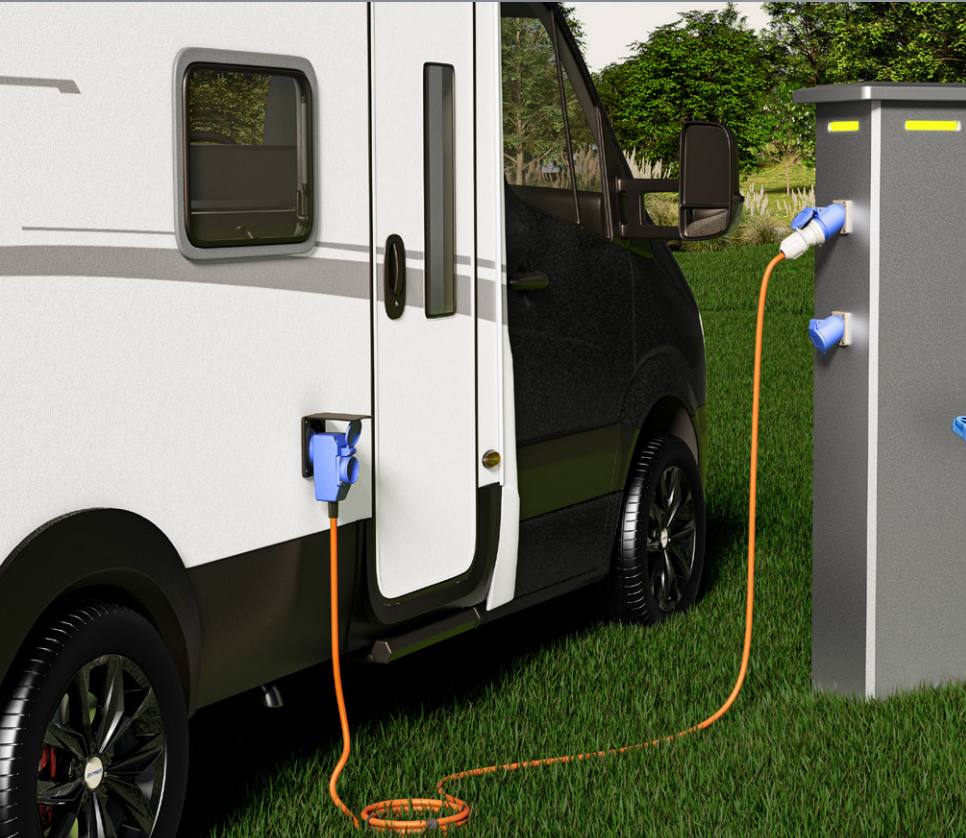


PRODUCT NEWS

wentronic

03 / 2025



Slim High Speed HDMI™ Cable with Ethernet

4K/60Hz



Features

The cable is suitable for high-resolution image transmission with Ultra HD at up to 4K @ 60 Hz (backward compatible) and a data rate of up to 18 Gbit/s

Ideally suited for audio and video transmission between TV/monitor and projectors, game consoles (e.g. PlayStation 5, Xbox) or streaming receivers (e.g. Amazon Fire TV, Apple TV)

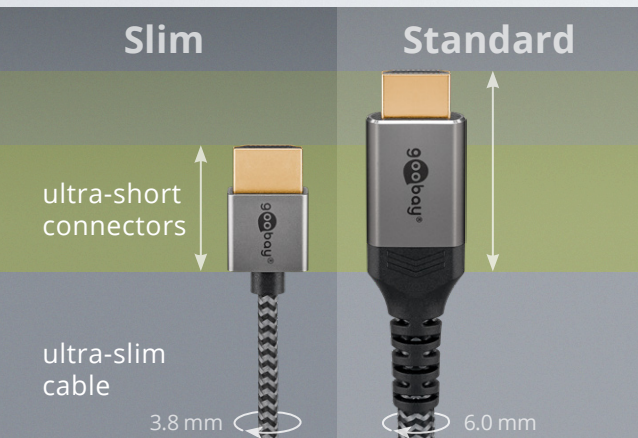
Ultraslim design with short plug, bend protection and small bending radius for connection in confined spaces, e.g. on the back of devices in front of walls or in furniture

With high-quality metal plugs and textile sheathing, which ensures a pleasant feel and protects sensitive surfaces

The integrated Ethernet channel (HEC) connects any HDMI™ device to devices in the wired network without a separate internet cable

The CEC function (Consumer Electronics Control) creates flexible operability via only one remote control, e.g. for switching on several paired HDMI™ devices with a single press of a button

Supports 3D and HDR for excellent, high-contrast picture quality, HDCP 2.2 encryption and sophisticated audio features such as ARC and eARC (Enhanced Audio Return Channel)



Availability	Cable length	Item no.	EAN	RRP	Pcs./master carton	Pcs./PU	Length	Width	Height	Weight
• vsl. ab KW 14	0.50 m	75751	4040849757518	7.99 €	300	1	11.00 cm	11.00 cm	0.80 cm	0.059 kg
• vsl. ab KW 14	1.00 m	75752	4040849757525	8.99 €	260	1	11.00 cm	11.00 cm	2.00 cm	0.069 kg
• vsl. ab KW 14	2.00 m	75753	4040849757532	9.99 €	200	1	12.00 cm	12.00 cm	2.50 cm	0.087 kg
• vsl. ab KW 14	3.00 m	75754	4040849757549	14.99 €	160	1	12.00 cm	12.00 cm	2.50 cm	0.105 kg
• vsl. ab KW 14	5.00 m	75755	4040849757556	19.99 €	100	1	14.00 cm	14.00 cm	3.00 cm	0.185 kg

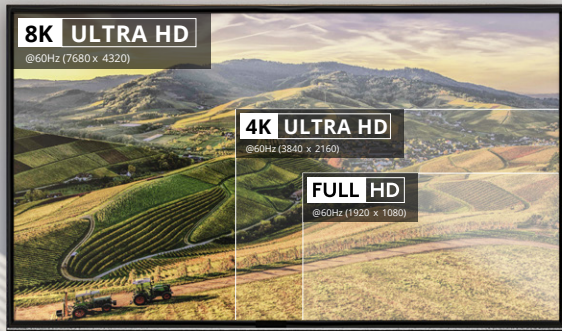
Slim Ultra High Speed HDMI™ Cable

8K/60Hz



8K HDMI™ Cable

for high-resolution audio & video transmission



Features

The cable is suitable for high-resolution image transmission with Ultra HD at up to 8K @ 60 Hz (backward compatible) and a data rate of up to 48 Gbit/s

Ideally suited for audio and video transmission between TV/monitor and projectors, game consoles (e.g. PlayStation 5, Xbox) or streaming receivers (e.g. Amazon Fire TV, Apple TV)

Ultraslim design with short plug, bend protection and small bending radius for connection in confined spaces, e.g. on the back of devices in front of walls or in furniture

With high-quality metal plugs and textile sheathing, which ensures a pleasant feel and protects sensitive surfaces

The CEC function (Consumer Electronics Control) creates flexible operability via only one remote control, e.g. for switching on several paired HDMI™ devices with a single press of a button

Supports 3D and HDR (High Dynamic Range) for excellent, high-contrast picture quality as well as the HDCP 2.2 encryption system

Supports advanced audio features such as eARC (Enhanced Audio Return Channel) and ARC (Audio Return Channel) for easy digital transmission from the TV to a soundbar or hi-fi system

Availability	Cable length	Item no.	EAN	RRP	Pcs./master carton	Pcs./PU	Length	Width	Height	Weight
● exp. from WEEK 14	0.50 m	75756	4040849757563	8.99 €	300	1	11.00 cm	11.00 cm	0.80 cm	0.059 kg
● exp. from WEEK 14	1.00 m	75757	4040849757570	9.99 €	260	1	10.00 cm	10.00 cm	2.00 cm	0.069 kg
● exp. from WEEK 14	2.00 m	75758	4040849757587	14.99 €	200	1	12.00 cm	12.00 cm	2.50 cm	0.087 kg

High Speed HDMI™ Extension Cable with Ethernet

8K/60Hz



Brilliant Image Quality

e.g. for TV sets, screens, consoles, projectors or streaming receivers



Features

Especially handy for extending existing or fixed, hard-to-reach HDMI™ connections

The cable is suitable for high-resolution image transmission with Ultra HD at up to 8K @ 60 Hz (backward compatible) and a data rate of up to 48 Gbit/s

Ideally suited for audio and video transmission between TV/monitor and projectors, game consoles (e.g. PlayStation, Xbox) or streaming receivers (e.g. Amazon Fire TV, Apple TV)

The integrated Ethernet channel (HEC) connects any HDMI™ device to devices in the wired network without a separate internet cable

The CEC function (Consumer Electronics Control) creates flexible operability via only one remote control, e.g. for switching on several paired HDMI™ devices with a single press of a button

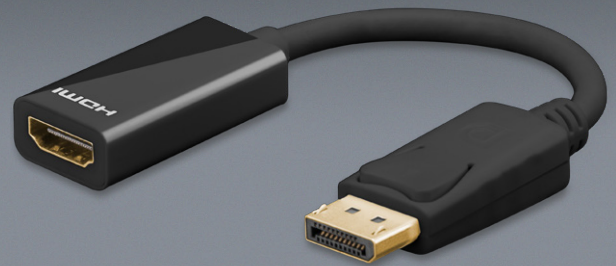
Supports 3D and HDR (High Dynamic Range) for excellent, high-contrast picture quality as well as the HDCP 2.2 encryption system

Supports advanced audio features such as eARC (Enhanced Audio Return Channel) and ARC (Audio Return Channel) for easy digital transmission from the TV to a soundbar or hi-fi system

Availability	Cable length	Item no.	EAN	RRP	Pcs./master carton	Pcs./PU	Length	Width	Height	Weight
● exp. from WEEK 14	0.50 m	76268	4040849762680	8.99 €	100	1	18.00 cm	11.00 cm	2.00 cm	0.046 kg
● exp. from WEEK 14	1.00 m	76269	4040849762697	9.99 €	70	1	17.00 cm	15.00 cm	2.00 cm	0.070 kg
● exp. from WEEK 14	1.50 m	76270	4040849762703	10.99 €	60	1	23.00 cm	18.00 cm	3.00 cm	0.094 kg
● exp. from WEEK 14	2.00 m	76271	4040849762710	12.99 €	50	1	19.00 cm	15.00 cm	3.00 cm	0.117 kg
● exp. from WEEK 14	3.00 m	76272	4040849762727	16.99 €	40	1	17.00 cm	17.00 cm	3.00 cm	0.170 kg
● exp. from WEEK 14	5.00 m	76273	4040849762734	19.99 €	20	1	23.00 cm	18.00 cm	4.00 cm	0.261 kg

DisplayPort™/HDMI™ Adapter Cable, gold-plated

DisplayPort™ male > HDMI™ female (Type A)



Features

Goobay adapter transmits HD video and audio signals from a computer to a screen

signal transmission with resolutions of up to 4K @ 60 Hz

DisplayPort™-to-HDMI™ adapter as a simple solution for adding an external monitor (Plug & Play)

Gold-plated connectors guarantee a perfect signal transmission, clear sound and razor-sharp video and picture quality

DisplayPort™ connector with mechanical connector lock for secure hold without loose contacts

Flexible PVC cable sheath

Connection cable supports DisplayPort™ 1.2 (backwards compatible with DisplayPort™)

4K @ 60 Hz

Availability	Item no.	EAN	RRP	Pcs./master carton	Pcs./PU	Length	Width	Height	Weight
● exp. from WEEK 14	75269	4040849752698	12.99 €	250	1	20.00 cm	2.00 cm	1.20 cm	0.023 kg

8K @ 60 Hz

Availability	Item no.	EAN	RRP	Pcs./master carton	Pcs./PU	Length	Width	Height	Weight
● exp. from WEEK 14	75270	4040849752704	14.99 €	250	1	20.00 cm	2.00 cm	1.20 cm	0.023 kg

USB-C™ PD GaN Dual Fast Charger Nano (35 W)

2x USB-C™ ports (Power Delivery)



Features

With 35 W of power, the charging adapter is specially tailored to small devices such as smartphones, Bluetooth headphones, tablets or power banks

The wall charger can be used to charge up to two devices at the same time, e.g. via USB-C™ smartphones such as the Apple iPhone and via USB-A headphones, power banks, etc.

The super-compact and lightweight design fits in any bag and makes the USB-C™ power supply the handy companion when travelling

Semiconductors with GaN technology allow for faster, more efficient charging and a lighter, more compact design compared to conventional chargers

With Power Delivery, the USB charger comes with a particularly safe and dynamic charging method that identifies the optimal output power for the connected device

Compatible with smartphone brands such as Apple iPhone, Samsung, Xiaomi, LG, Huawei, as well as tablets such as the Apple iPad or the Samsung Galaxy Tab

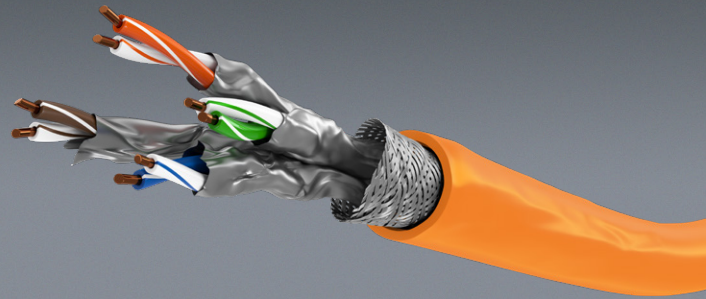
The integrated protection electronics of the USB-C™ charger protects connected devices against overcurrent, overcharging and overheating



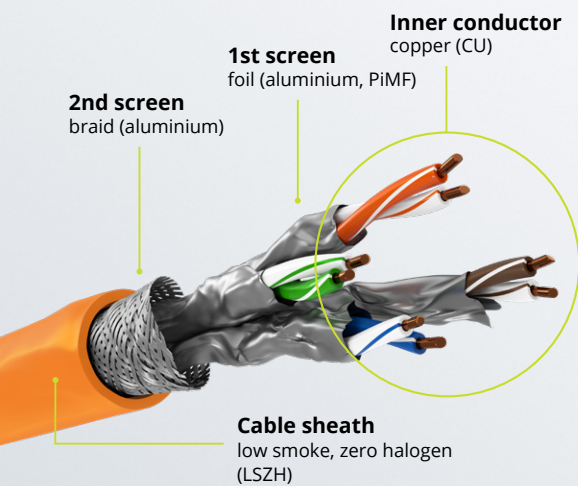
Availability	Colour	Item no.	EAN	RRP	Pcs./master carton	Pcs./PU	Length	Width	Height	Weight
● exp. from WEEK 12	black	75333	4040849753336	18.99 €	120	1	15.50 cm	15.00 cm	4.00 cm	0.076 kg
● exp. from WEEK 12	white	75334	4040849753343	18.99 €	120	1	15.50 cm	15.00 cm	4.00 cm	0.076 kg

CAT 7A Network Cable, S/FTP (PiMF)

(CU) AWG 23/1 (solid), (LSZH) halogen-free cable sheath



For Assembling LAN and Crossover Cables



Patch cable for RJ45 plugs



Double-shielded S/FTP (PiMF)



Transmission length up to 50 m



Max. bandwidth 1000 MHz

Features

Double shielded LAN cable for connecting network components

Unterminated patch cable with IDC connection technology for assembly and installation indoors

S/FTP overall shield: aluminium foil shield for individual wire pairs (PiMF) and aluminium braid shield for the cable sheath

High-quality copper conductor (CU) and shielding guarantee an excellent and powerful network connection.

In the event of a fire, the halogen-free jacket of the Ethernet cable prevents the outgassing of hazardous substances and minimises smoke development

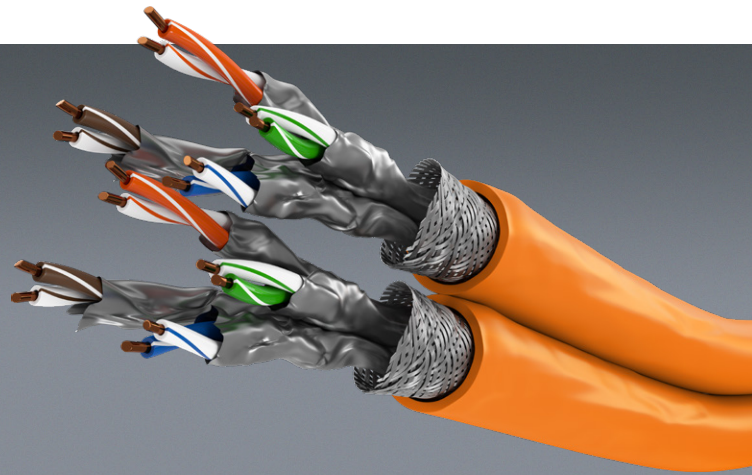
CAT 7A network cable is suitable for Power over Ethernet (PoE/PoE+)

Complies with the Construction Products Regulation (CPR) and fire protection class

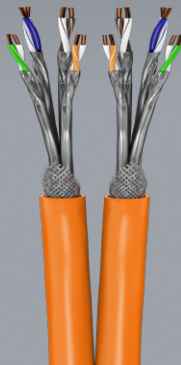
Availability	Cable length	Item no.	EAN	RRP	Pcs./master carton	Pcs./PU	Length	Width	Height	Weight
● exp. from WEEK 14	50.00 m	75713	4040849757136	49.99 €	4	1	23.00 cm	23.00 cm	17.00 cm	2.940 kg

CAT 7A Duplex Network Cable, S/FTP (PiMF)

(CU) AWG 23/1 (solid), (LSZH) halogen-free cable sheath



fire protection classification



Features

Double shielded LAN cable for connecting network components

Unterminated patch cable with IDC connection technology for assembly and installation indoors

S/FTP overall shield: aluminium foil shield for individual wire pairs (PiMF) and aluminium braid shield for the cable sheath

High-quality copper conductor (CU) and shielding guarantee an excellent and powerful network connection.

In the event of a fire, the halogen-free jacket of the Ethernet cable prevents the outgassing of hazardous substances and minimises smoke development

CAT 7A network cable is suitable for Power over Ethernet (PoE/PoE+)

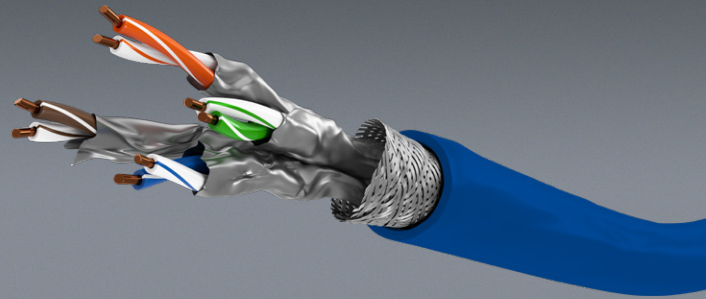
Complies with the Construction Products Regulation (CPR) and fire protection class



Availability	Cable length	Item no.	EAN	RRP	Pcs./master carton	Pcs./PU	Length	Width	Height	Weight
● exp. from WEEK 14	50.00 m	75714	4040849757143	99.99 €	2	1	28.50 cm	28.50 cm	15.50 cm	6.000 kg

CAT 7A Network Cable, S/FTP (PiMF)

Copper conductor (CU), AWG , halogen-free cable sheath (LSZH)

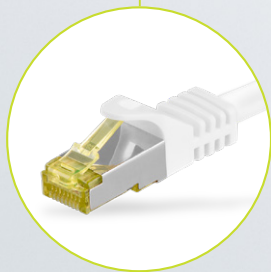


Cut to Individual Size

perfect for customising network cables

IDC mounting
for an easy placement
of individual wires

RJ45-compatible
(plugs not included)



Features

Double-shielded LAN cable for the small office and working from home (SOHO and WFH applications)

Unterminated patch cable for assembly and installation with IDC connection technology

S/FTP overall shield: aluminium foil shield for individual wire pairs (PiMF) and aluminium braid shield for the cable sheath

High-quality copper conductor (CU) and shielding guarantee an excellent and powerful network connection

In the event of a fire, the halogen-free jacket of the Ethernet cable prevents the outgassing of hazardous substances and minimises smoke development

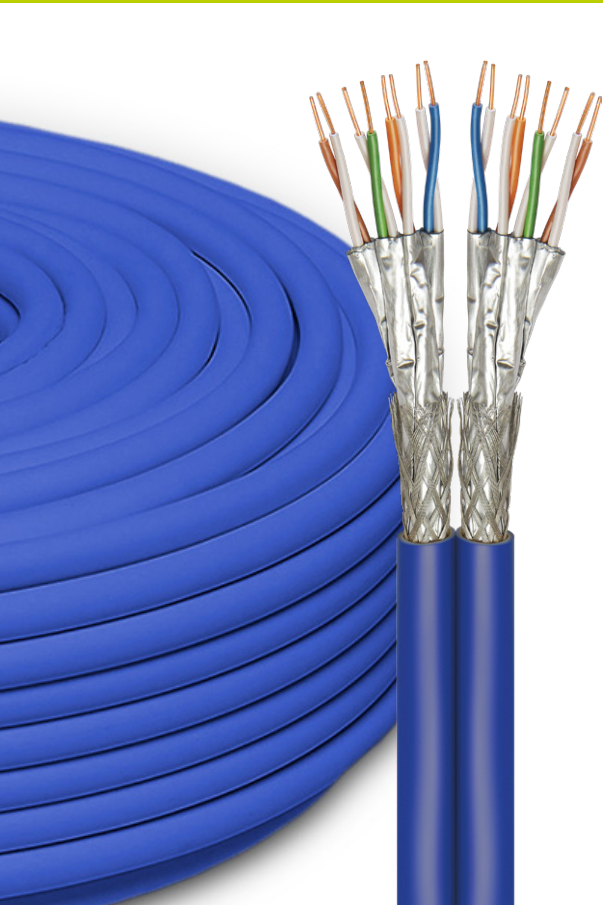
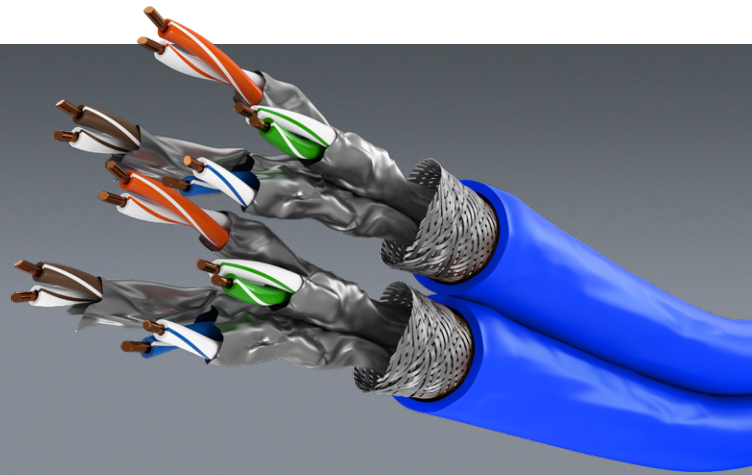
CAT 7A network cable is suitable for Power over Ethernet (PoE/PoE+)

Complies with the Construction Products Regulation (CPR) and fire protection class

Availability	Cable length	Item no.	EAN	RRP	Pcs./master carton	Pcs./PU	Length	Width	Height	Weight
● exp. from WEEK 14	50.00 m	75715	4040849757150	59.99 €	4	1	23.00 cm	23.00 cm	15.00 cm	3.100 kg

CAT 7A Duplex Network Cable, S/FTP (PiMF)

Copper conductor (CU), AWG , halogen-free cable sheath (LSZH)



Features

Double shielded LAN cable for the small office and working from home (SOHO and WFH applications)

Unterminated patch cable with IDC connection technology for assembly and installation indoors

S/FTP overall shield: aluminium foil shield for individual wire pairs (PiMF) and aluminium braid shield for the cable sheath

High-quality copper conductor (CU) and shielding guarantee an excellent and powerful network connection

In the event of a fire, the halogen-free jacket of the Ethernet cable prevents the outgassing of hazardous substances and minimises smoke development

CAT 7A network cable is suitable for Power over Ethernet (PoE/PoE+).

Complies with the Construction Products Regulation (CPR) and fire protection class

Availability	Cable length	Item no.	EAN	RRP	Pcs./master carton	Pcs./PU	Length	Width	Height	Weight
● exp. from WEEK 14	50.00 m	75716	4040849757167	109.99 €	2	1	28.50 cm	28.50 cm	15.00 cm	6.230 kg

CEE Extension Cable, CEE Plug to CEE Coupler

camping cable for outdoor areas



Features

The essential camping accessory: CEE adapter for connecting a motorhome, caravan or trailer tent to the power grid at the campsite

Easily connected: The extension cable offers full flexibility for existing CEE camping cables that are too short for sockets that are further away

With IP44 splash water protection, it is perfectly suited for long-term outdoor use, in roofed areas, damp rooms and on construction sites

The orange signal colour of the power cable ensures increased visibility and meets the safety standards on international campsites

The integrated, self-closing cap of the CEE socket protects against dust, dirt and mechanical damage

Heavy-duty rubber sheath cable H07RN-F 3G2.5 with a cable cross-section of 2.5 mm² as required on camping sites

Oil, UV and ozone resistant

Availability	Cable length	Item no.	EAN	RRP	Pcs./master carton	Pcs./PU	Length	Width	Height	Weight
● exp. from WEEK 13	5.00 m	76228	4040849762284	29.99 €	4	1	24.00 cm	24.00 cm	8.00 cm	1.335 kg
● exp. from WEEK 13	10.00 m	76229	4040849762291	44.99 €	4	1	24.00 cm	24.00 cm	9.00 cm	2.330 kg
● exp. from WEEK 13	25.00 m	76230	4040849762307	94.99 €	2	1	30.00 cm	30.00 cm	7.00 cm	5.540 kg

CEE Adapter Cable, CEE Plug to 90° CEE Coupler and Safety Coupler (Type E/F)

camping cable for outdoor areas



Features

The essential camping accessory: CEE adapter with combination socket for connecting a motorhome, caravan or trailer tent to the power grid at the campsite

The angled coupler easily connects an additional device with safety plug to the motorhome – and saves space due to the angled design

With IP44 splash water protection, it is perfectly suited for long-term outdoor use, in roofed areas, damp rooms and on construction sites

The orange signal colour of the power cable ensures increased visibility and meets the safety standards on international campsites

The integrated, self-closing caps of the CEE socket and the safety socket protect against dust, dirt and mechanical damage

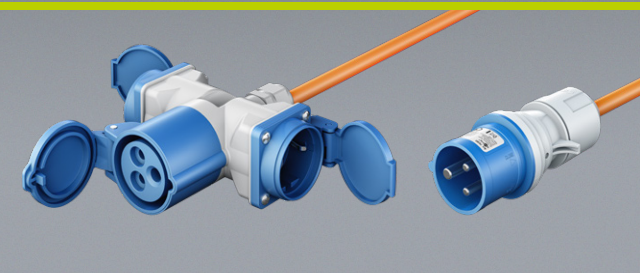
Heavy-duty rubber sheath cable H07RN-F 3G2.5 with a cable cross-section of 2.5 mm² as required on camping sites

Oil, UV and ozone resistant

Availability	Cable length	Item no.	EAN	RRP	Pcs./master carton	Pcs./PU	Length	Width	Height	Weight
● exp. from WEEK 13	1.50 m	76232	4040849762321	24.99 €	8	1	31.00 cm	30.00 cm	6.00 cm	0.705 kg
● exp. from WEEK 13	5.00 m	76233	4040849762338	34.99 €	4	1	33.00 cm	23.00 cm	6.00 cm	1.405 kg

CEE Adapter Cable, CEE Plug to 1x CEE Coupler and 2x Safety Coupler (Type E/F)

camping cable for outdoor areas



Features

The essential camping accessory: CEE adapter with combination socket for connecting a motorhome, caravan or trailer tent to the power grid at the campsite

The angled coupler easily connects two additional devices with safety plugs to the outside connection of the motorhome

With IP44 splash water protection, it is perfectly suited for long-term outdoor use, in roofed areas, damp rooms and on construction sites

The orange signal colour of the power cable ensures increased visibility and meets the safety standards on international campsites

The integrated, self-closing caps of the CEE socket and the safety sockets protect against dust, dirt and mechanical damage

Heavy-duty rubber sheath cable H07RN-F 3G2.5 with a cable cross-section of 2.5 mm² as required on camping sites

Oil, UV and ozone resistant

Availability	Cable length	Item no.	EAN	RRP	Pcs./master carton	Pcs./PU	Length	Width	Height	Weight
● exp. from WEEK 13	1.50 m	76231	4040849762314	27.99 €	8	1	20.00 cm	20.00 cm	0.00 cm	0.735 kg
● exp. from WEEK 13	5.00 m	76265	4040849762659	37.99 €	4	1	24.00 cm	24.00 cm	5.00 cm	1.460 kg
● exp. from WEEK 13	10.00 m	76266	4040849762666	54.99 €	4	1	25.00 cm	25.00 cm	5.00 cm	2.485 kg

CEE Adapter Cable, CEE Plug to Safety Coupler (Type E/F)

camping cable for outdoor areas



Features

The essential camping accessory: CEE adapter for connecting a motorhome, caravan or trailer tent to the power grid at the campsite

Can also be used to bridge larger distances up to the 230 V mains connection in combination with a safety plug extension

With IP44 splash water protection, it is perfectly suited for long-term outdoor use, in roofed areas, damp rooms and on construction sites

The orange signal colour of the power cable ensures increased visibility and meets the safety standards on international campsites

The integrated cap of the safety socket protects against dust, dirt and mechanical damage

Heavy-duty rubber sheath cable H07RN-F 3G2.5 with a cable cross-section of 2.5 mm² as required on camping sites

Oil, UV and ozone resistant

Availability	Cable length	Item no.	EAN	RRP	Pcs./master carton	Pcs./PU	Length	Width	Height	Weight
● exp. from WEEK 13	1.50 m	76223	4040849762239	16.99 €	8	1	31.00 cm	20.00 cm	6.00 cm	0.580 kg
● exp. from WEEK 13	5.00 m	76224	4040849762246	29.99 €	4	1	30.00 cm	30.00 cm	6.00 cm	1.310 kg

CEE Adapter Cable, CEE Coupler to Safety Plug (Type E/F)

camping cable for outdoor areas



Features

With IP44 splash water protection, it is perfectly suited for long-term outdoor use, in roofed areas, damp rooms and on construction sites

The orange signal colour of the power cable ensures increased visibility

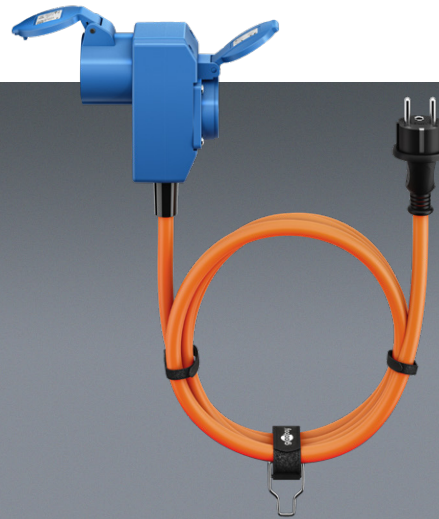
The integrated, self-closing cap of the CEE socket protects against dust, dirt and mechanical damage

Heavy-duty rubber sheath cable H07RN-F 3G2.5 with a cable cross-section of 2.5 mm²

Depending on local safety requirements, it may be used as a CEE adapter for motorhomes, caravans and camping or at the campsite

Oil, UV and ozone resistant, Note: not protected against reverse polarity

Availability	Cable length	Item no.	EAN	RRP	Pcs./master carton	Pcs./PU	Length	Width	Height	Weight
● exp. from WEEK 13	1.50 m	76185	4040849761850	16.99 €	8	1	34.00 cm	20.00 cm	6.00 cm	0.555 kg
● exp. from WEEK 13	5.00 m	76219	4040849762192	29.99 €	4	1	31.00 cm	30.00 cm	6.00 cm	1.285 kg



CEE Adapter Cable, Safety Plug (Type E/F) to 90° CEE Coupler and Safety Coupler (Type E/F)

camping cable for outdoor areas

Certainly Safe

oil, UV and ozone-resistant



Integrated cap
protects against dust,
dirt and mechanical
damage

H07RN-F3G2.5
heavy-duty rubber sheath
cable in accordance with
campsite requirements

Orange signal colour
increases visibility and
fulfils requirements at
international campsites

Features

With IP44 splash water protection, it is perfectly suited for long-term outdoor use, in roofed areas, damp rooms and on construction sites

The angled coupler easily connects an additional device with safety plug – and saves space due to the angled design

The orange signal colour of the power cable ensures increased visibility

The integrated, self-closing caps of the CEE socket and the safety socket protect against dust, dirt and mechanical damage

Heavy-duty rubber sheath cable H07RN-F 3G2.5 with a cable cross-section of 2.5 mm²

Depending on local safety requirements, it may be used as a CEE adapter for motorhomes, caravans and camping or at the campsite

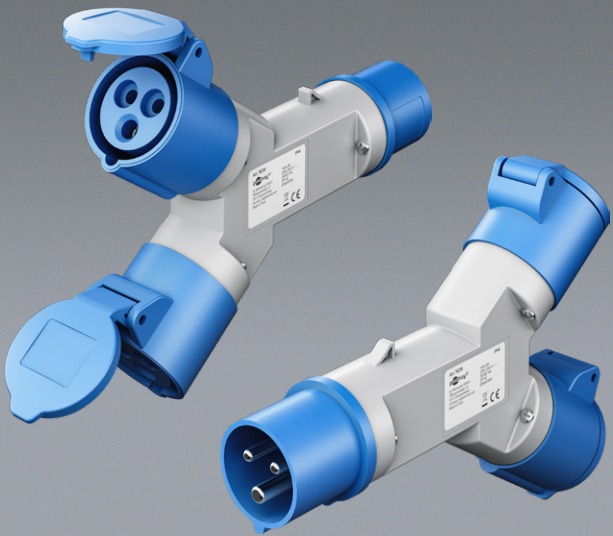
Oil, UV and ozone resistant, Note: not protected against reverse polarity



Availability	Item no.	EAN	RRP	Pcs./master carton	Pcs./PU	Length	Width	Height	Weight
● exp. from WEEK 13	76222	4040849762222	17.99 €	8	1	30.00 cm	30.00 cm	6.00 cm	0.645 kg

CEE Adapter, CEE Plug to 2x CEE Coupler

camping adapter for outdoor areas



Features

The essential camping accessory: CEE adapter with combination socket for connecting a motorhome, caravan or trailer tent to the power grid at the campsite

Extends the single CEE connection on camping power points to two CEE sockets

The compact design makes the CEE distributor easy to transport and store – perfect for when you are on the road, camping or on a construction site

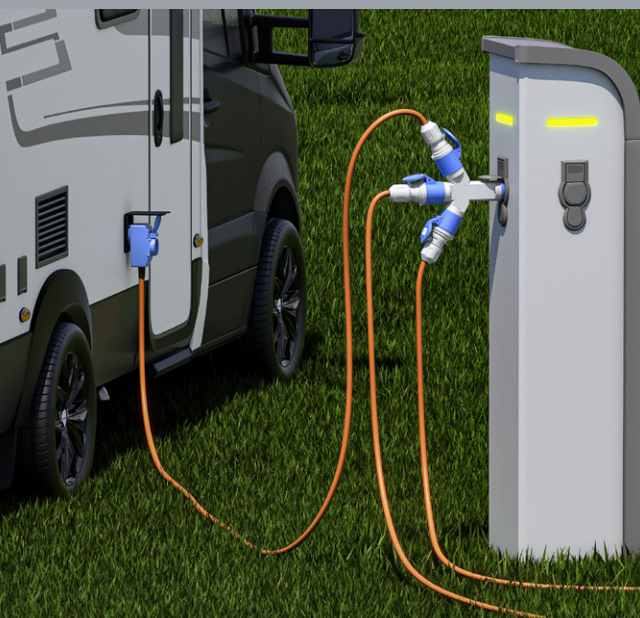
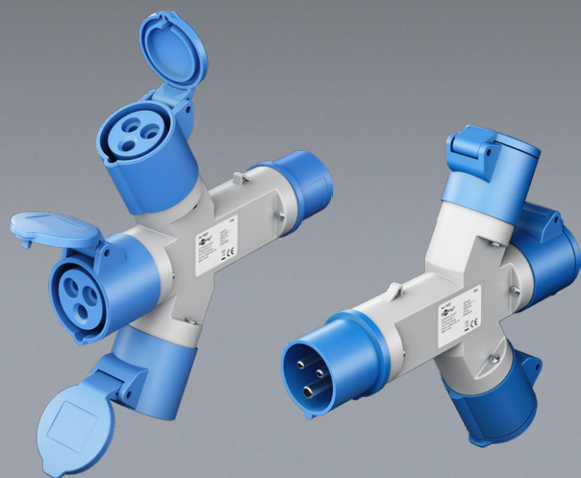
With IP44 splash water protection, it is perfectly suited for long-term outdoor use, in roofed areas, damp rooms and on construction sites

The integrated, self-closing caps on the CEE sockets protect against dust, dirt and mechanical damage

Availability	Item no.	EAN	RRP	Pcs./master carton	Pcs./PU	Length	Width	Height	Weight
● exp. from WEEK 13	76236	4040849762369	14.99 €	8	1	21.50 cm	17.00 cm	6.00 cm	0.325 kg

CEE Adapter, CEE Plug to 3x CEE Coupler

camping adapter for outdoor areas



Features

The essential camping accessory: CEE adapter with combination socket for connecting a motorhome, caravan or trailer tent to the power grid at the campsite

Extends the single CEE connection on camping power points to three CEE sockets

The compact design makes the CEE distributor easy to transport and store – perfect for when you are on the road, camping or on a construction site

With IP44 splash water protection, it is perfectly suited for long-term outdoor use, in roofed areas, damp rooms and on construction sites

The integrated, self-closing caps on the CEE sockets protect against dust, dirt and mechanical damage

Availability	Item no.	EAN	RRP	Pcs./master carton	Pcs./PU	Length	Width	Height	Weight
● exp. from WEEK 13	76237	4040849762376	17.99 €	8	1	23.00 cm	21.00 cm	5.00 cm	0.437 kg

Travel Adapter Europe to Switzerland, Italy and Brazil

for all earthed and unearthed devices (2- and 3-pole)



Features

Travel adapter for connecting electrical devices with safety plugs (type F) to sockets in Switzerland, Italy, Brazil and 12 other countries

Full flexibility: Ideal for powerful devices such as laptops or travel hairdryers, but also for adapters for smartphones, tablets, power banks, cameras, smartwatches or e-readers

Max. load: 10 A, input voltage: 100 – 250 V (AC), output depending on input voltage: 1000 – 2500 W

The European plug adapter has a replaceable fuse (type T 10 A)

The travel plug does not convert the voltage from the local power grid and may only be connected to devices with a suitable input voltage



Availability	Item no.	EAN	RRP	Pcs./master carton	Pcs./PU	Length	Width	Height	Weight
● exp. from WEEK 09	77297	4040849772979	14.90 €	20	1	18.00 cm	10.50 cm	5.50 cm	0.087 kg