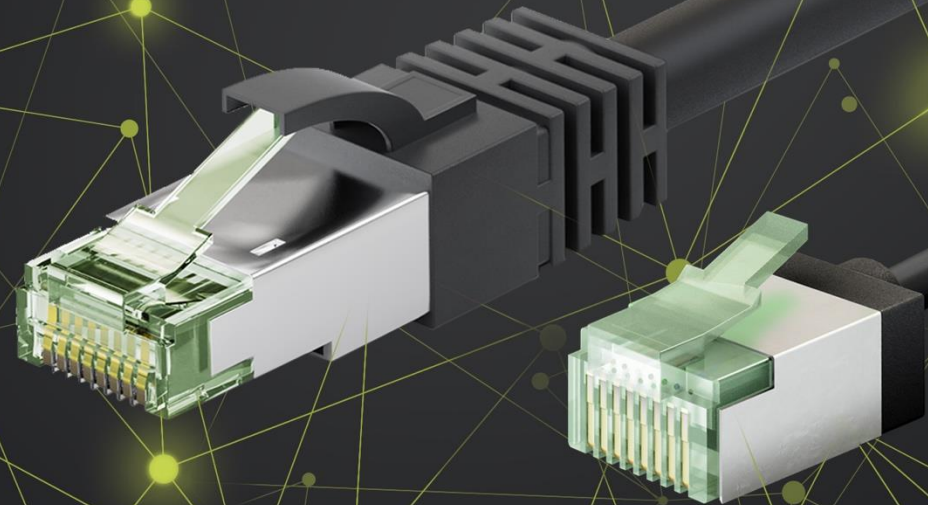




NETWORK TECHNOLOGY 2025

ONE RANGE. MANY BENEFITS.



DIVERSE & AVAILABLE

THE NETWORK RANGE



- 01 PATCH CABLES
- 02 CAT 8.1- GHMT®-CERTIFIED
- 03 OUTDOOR CABLES
- 04 NETWORK INSTALLATION CABLES
- 05 OPTICAL FIBRE CABLES
- 06 PATCH PANELS
- 07 NETWORK SWITCHES
- 08 KEYSTONES
- 09 CABLE MANAGEMENT & PROTECTION
- 10 INSTALLATION ACCESSORIES

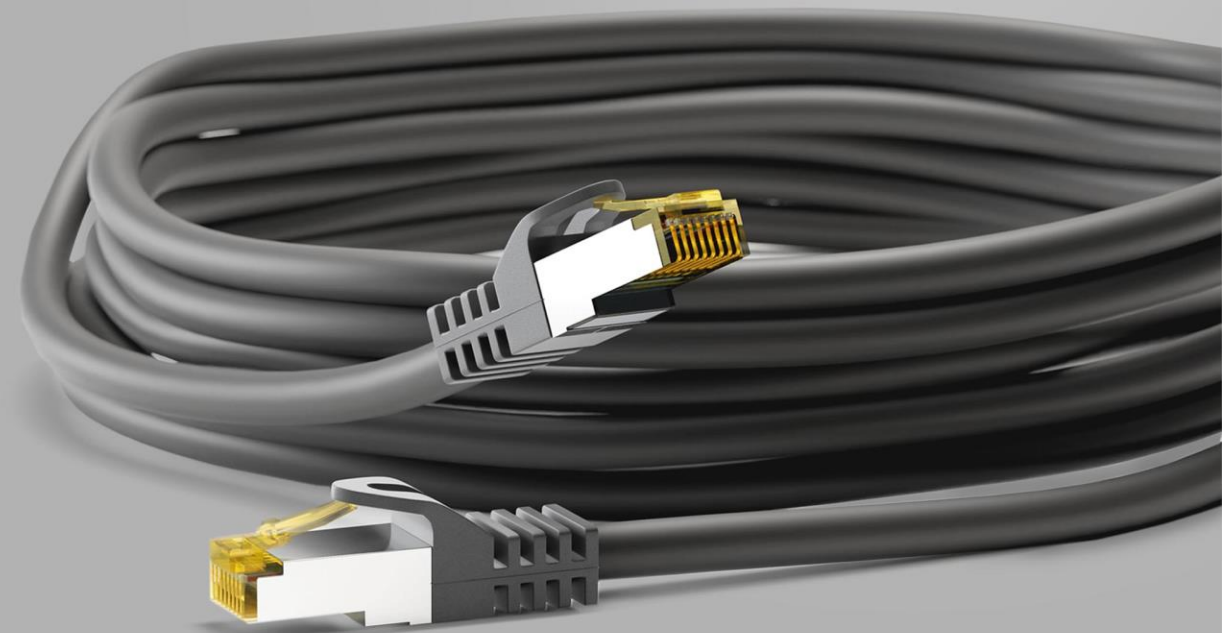
01 PATCH CABLES

PROVEN & PROFESSIONAL PATCH CABLES

THE FOUNDATION FOR HIGH-SPEED APPLICATIONS
FOR OFFICE AND BUILDING CABLING
VARIOUS PERFORMANCE CLASSES



OVER **33 SERIES**
IN MANY DESIGNS
1,500 SKUS



01 PATCH CABLES

BANDWIDTH OPTIONS CABLE TYPES

5 DIFFERENT CABLE CATEGORIES

AVAILABLE IN VARIOUS STANDARDISED
BANDWIDTHS:

- CAT 5E = 100 MHz
- CAT 6 = 250 MHz
- CAT 6A = 500 MHz
- CAT 7* = 600 MHz
- CAT 8.1 = 2,000 MHz

A large graphic showing the word "CAT" in white, uppercase letters. Below each letter, there are five black circles containing the following text in yellow: "5e", "6", "6A", "7*", and "8.1".

CAT

5e 6 6A 7* 8.1

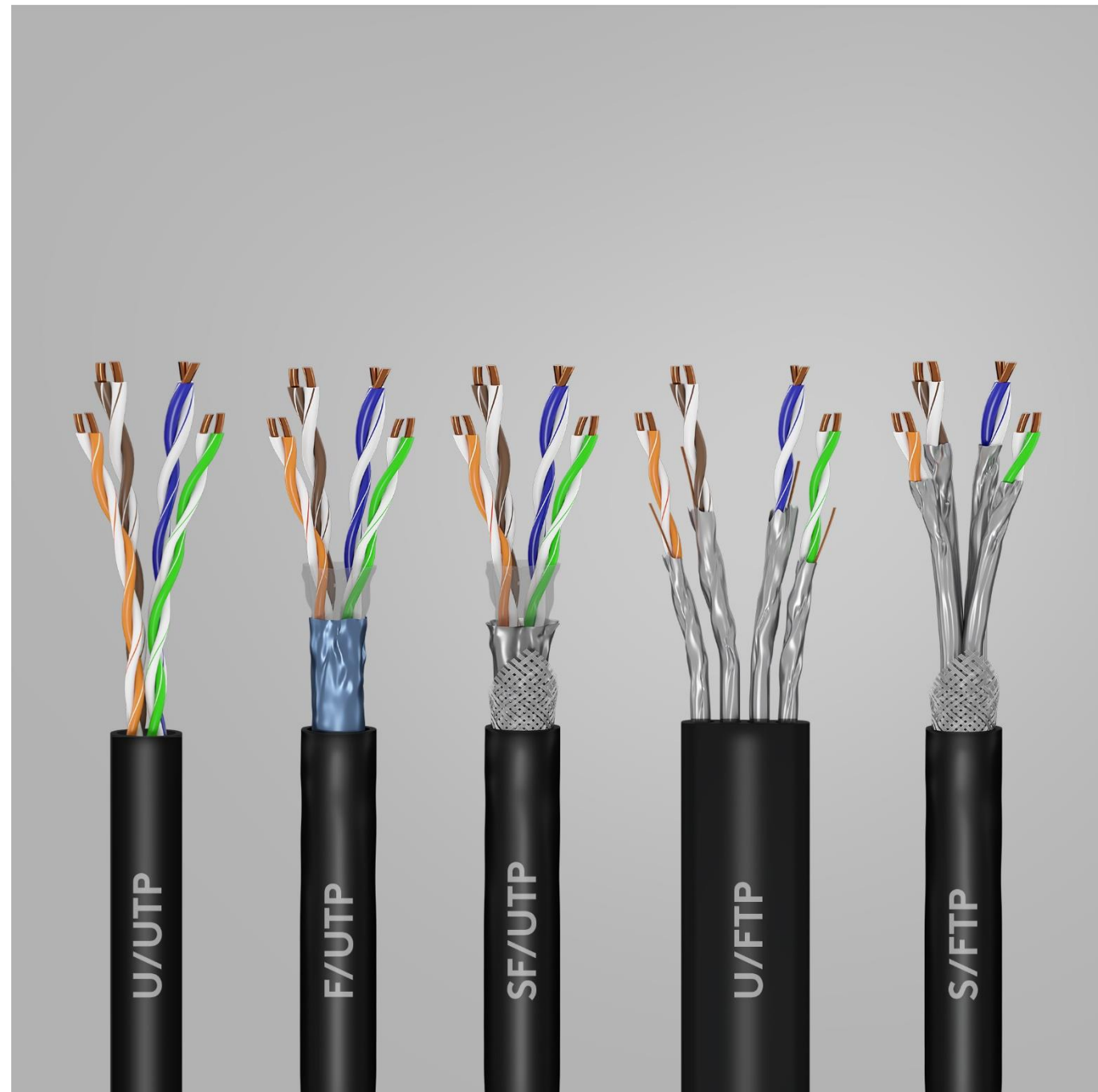
* CAT 7 raw cable with CAT 6A connectors

01 PATCH CABLES

NO INTERFERENCE SHIELDING

5 DIFFERENT TYPES OF SHIELDING

PROTECT AGAINST ELECTROMAGNETIC
INTERFERENCE



01 PATCH CABLES

HIGH QUALITY MATERIALS

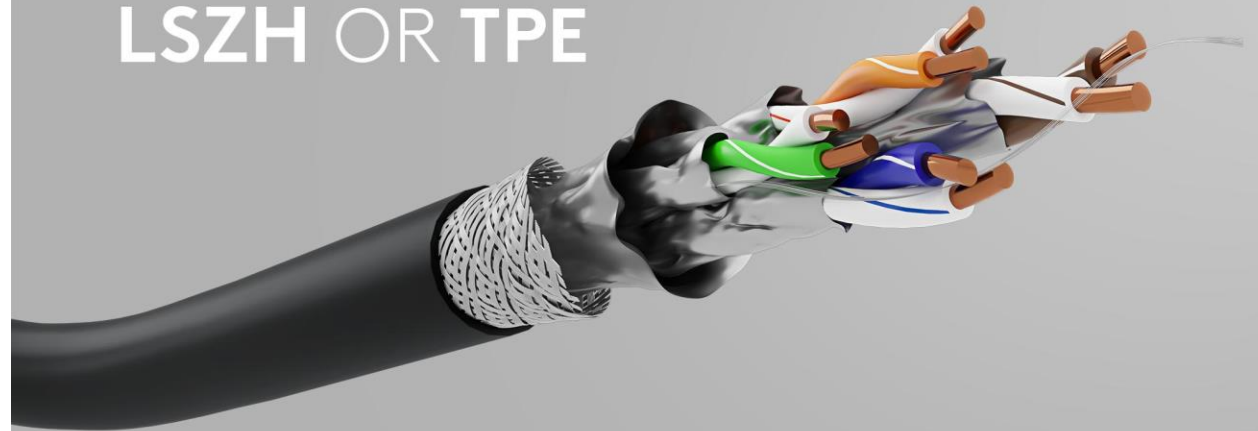
FROM COST-EFFICIENT TO HALOGEN-FREE



COPPER
PURE OR MIXED

PVC OR PE

LSZH OR TPE



01 PATCH CABLES

PRECISE FIT SHORT AND LONG CABLES

UP TO 18 DIFFERENT CABLE LENGTHS

LENGTH STAMPED ON ALMOST ALL RJ45
CONNECTORS AND EASY TO READ



0.15 METRES
TO **75** METRES

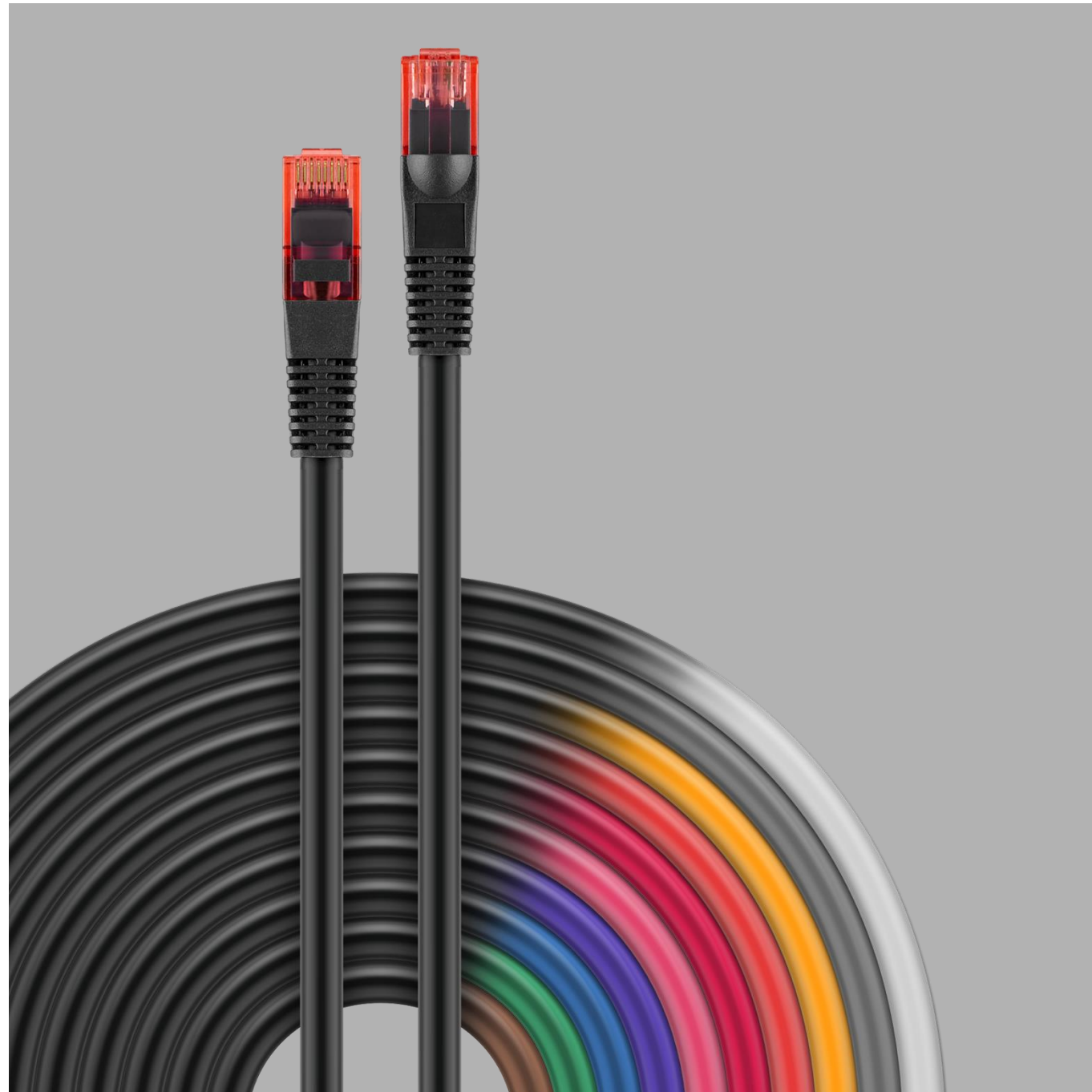
01 PATCH CABLES

CLEARLY STRUCTURED

11 CABLE COLOURS

FOR STRUCTURED CABLING

COLOURS FOR IMPROVED GUIDANCE



01 PATCH CABLES

INTUITIVE COLOUR-CODED PLUGS

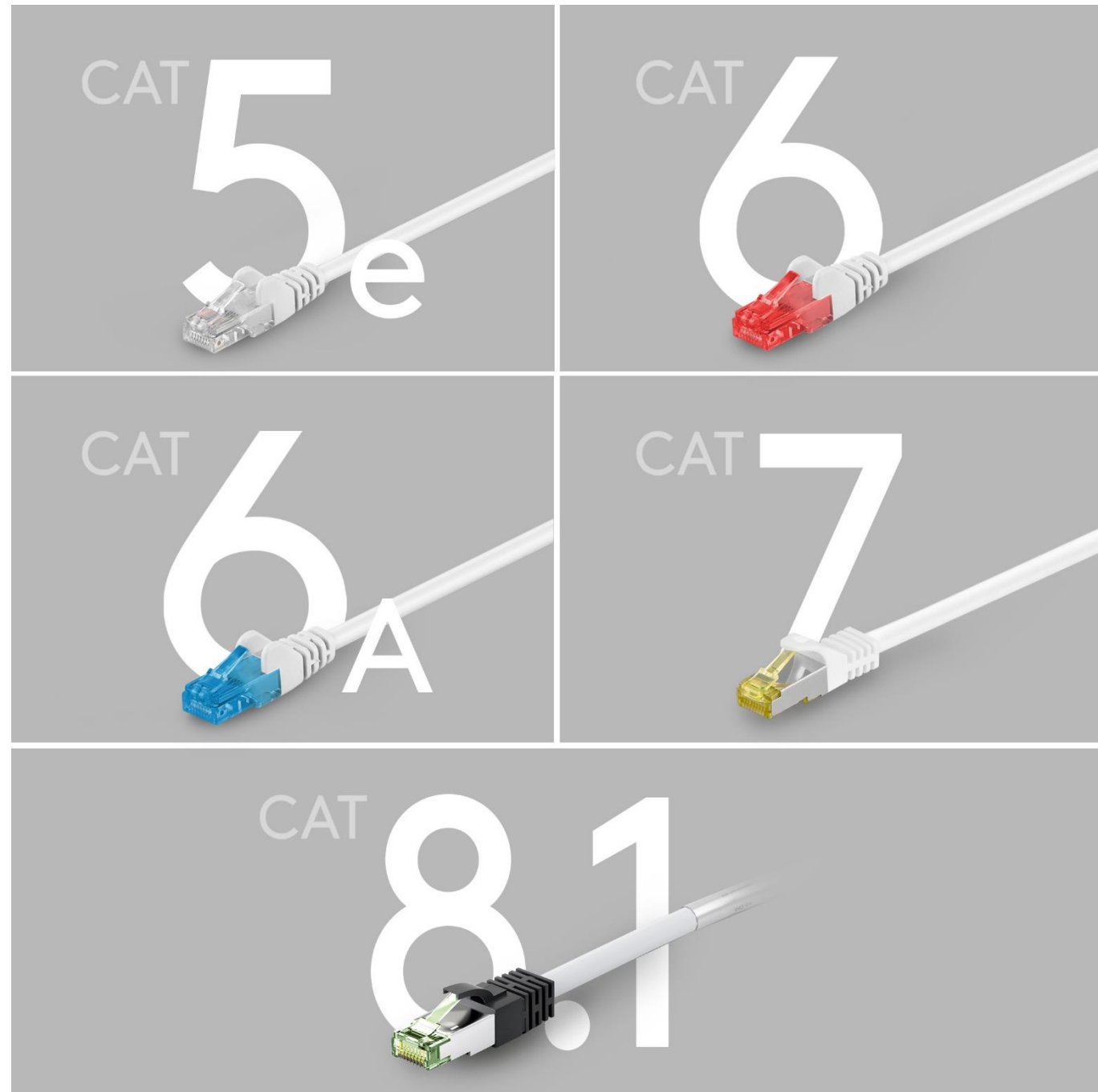
CAT 5E

CAT 6

CAT 6A

CAT 7 RAW CABLE

CAT 8.1



01 PATCH CABLES

OUTSTANDINGLY THIN & FLEXIBLE SLIM & FLAT CABLES

SLIM PATCH CABLES

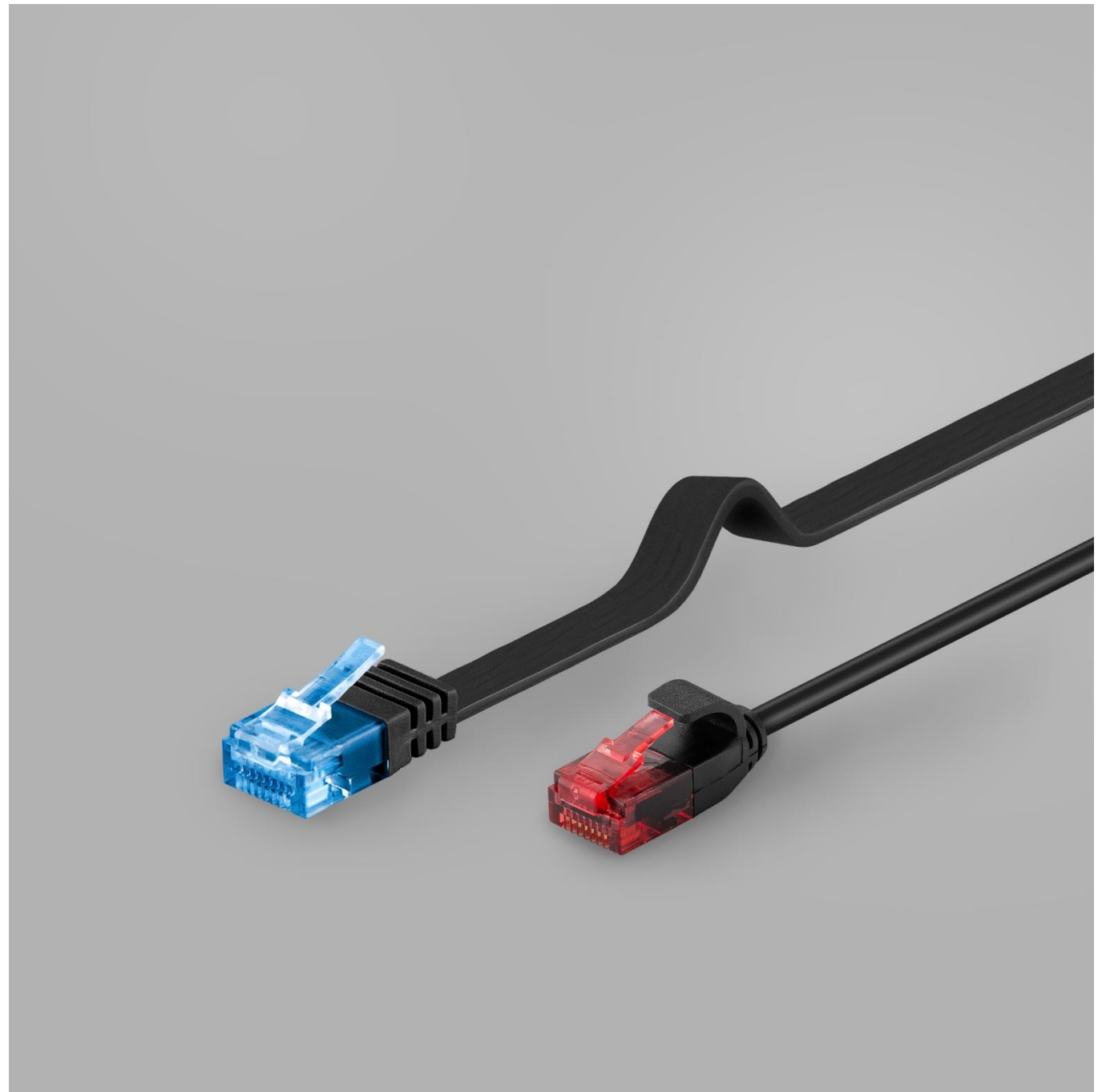
AVAILABLE AS CAT 6 U/UTP

EXTREMELY FLEXIBLE

FLAT PATCH CABLES

AVAILABLE AS CAT 5E, CAT 6 & CAT 6A

SHIELDED OR UNSHIELDED



01 PATCH CABLES

ULTRA-THIN AND ULTRAFLEXIBLE SLIM CABLE

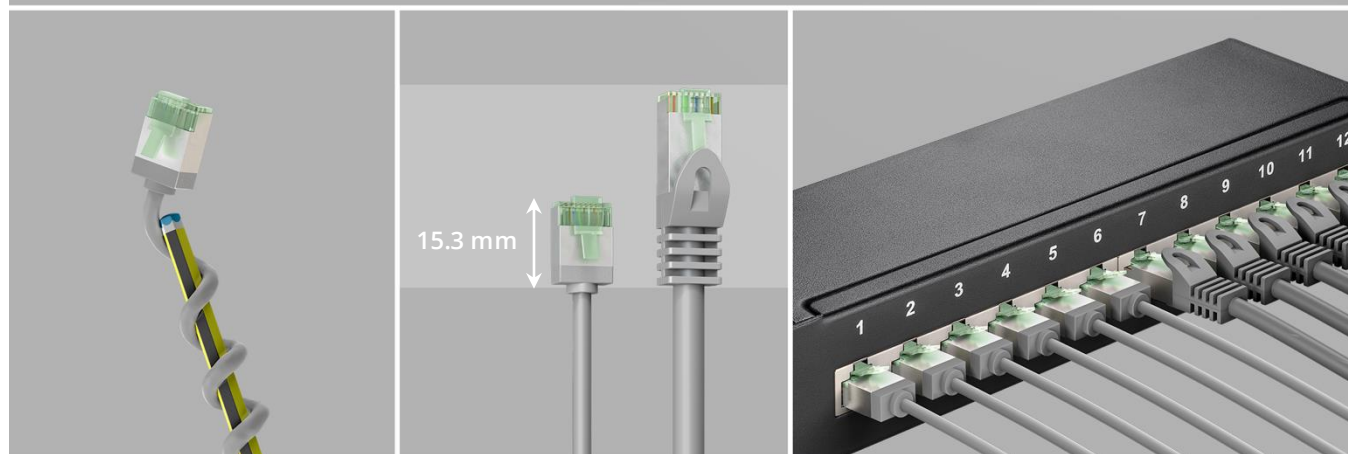
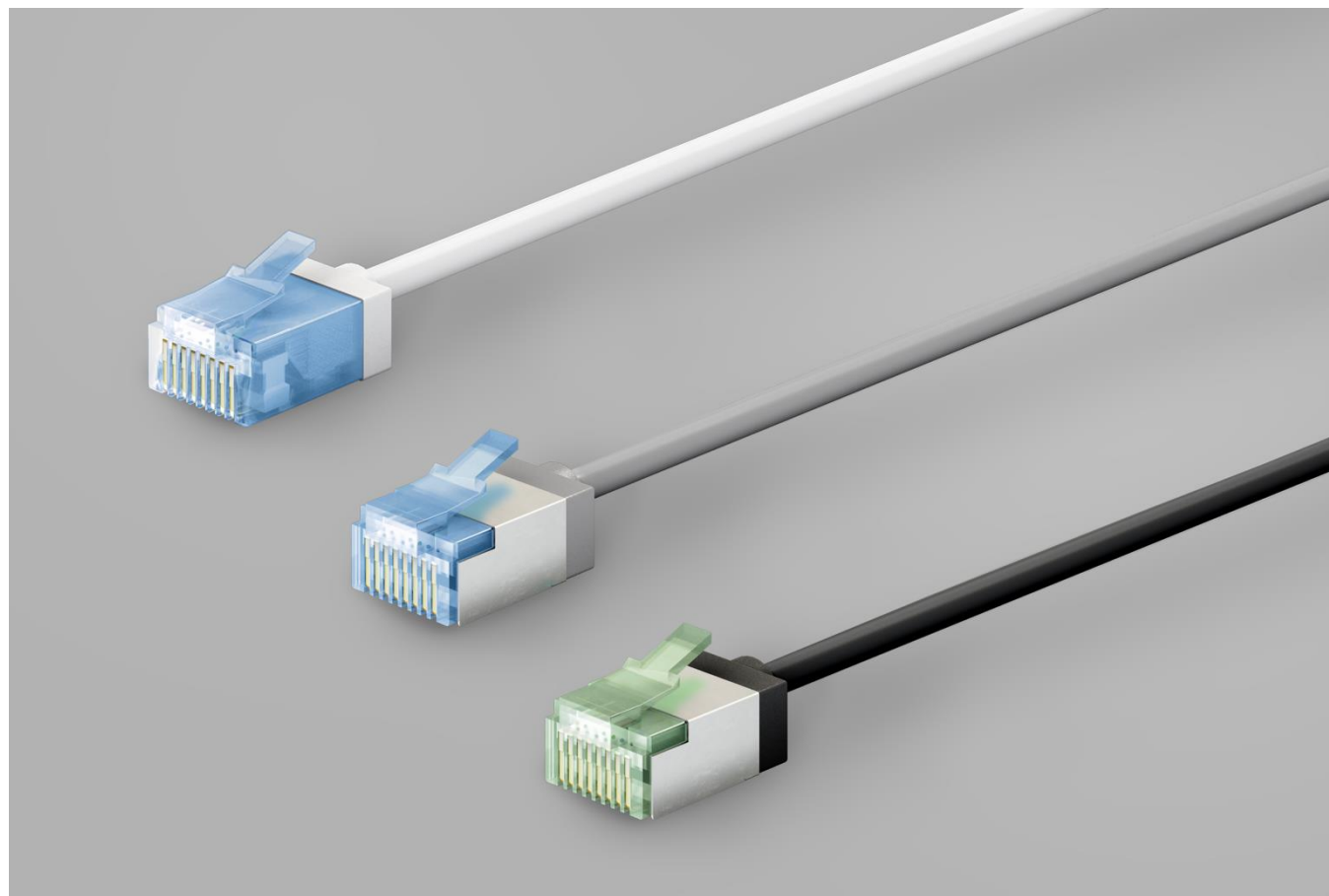
EXTREMELY SMALL BENDING RADIUS
THANKS TO TPE JACKET

EXTRA-SHORT RJ45 PLUG

CAT 6A U/UTP | Ø 2.8 mm

CAT 6A U/FTP | Ø 3.8 mm

CAT 8.1 U/FTP | Ø 3.8 mm



01 PATCH CABLES

SPACE SAVING ANGLED PLUGS

1x 90° ANGLED OR 2x 90° ANGLED

SHIELDED OR UNSHIELDED

goobay®



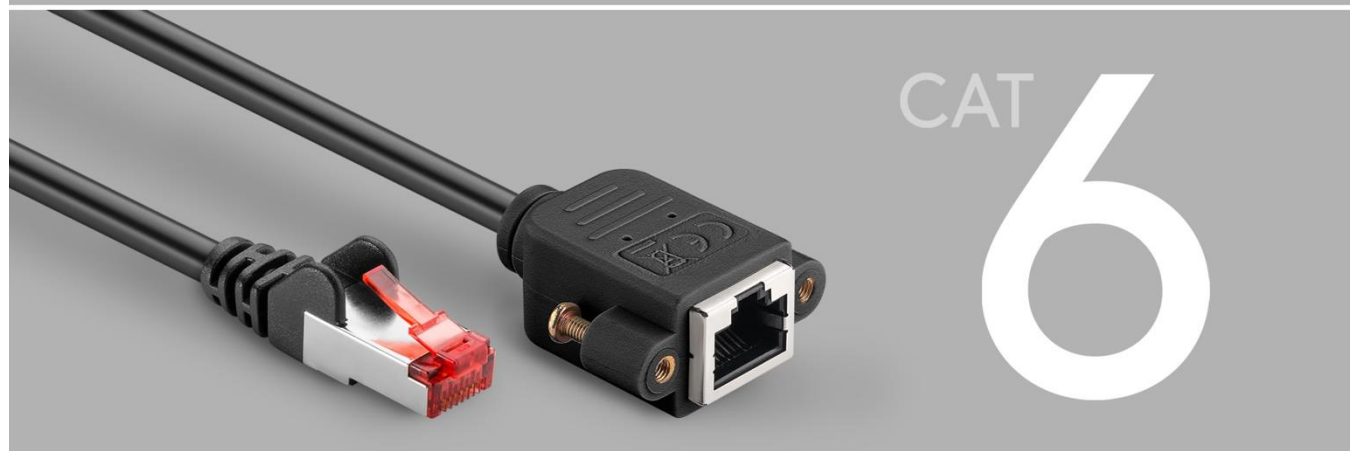
01 PATCH CABLES

EXTENSIBLE MALE-TO-FEMALE CABLES

FOR EASY EXTENSION OF CABLES

OR FOR RELOCATING HARD-TO-REACH
CONNECTORS

AVAILABLE AS CAT 5E, CAT 6 & CAT 6A



02 CAT 8.1

GHMT®-CERTIFIED 2-CONNECTOR CHANNEL* FOR YOUR CAT 8.1 NETWORK

COPPER CONDUCTOR, LSZH HALOGEN-FREE
CABLE JACKET

SUPPORTS* 25Base-T and 40GBase-T
BANDWIDTH OF UP TO 2,000 MHz

S/FTP OVERALL SHIELDING

SUITABLE FOR POWER OVER ETHERNET
(PoE, PoE+, UPoE, 4PPoE) AND HDBaseT SUITABLE

* GHMT®-CERTIFIED for a transmission distance of 1x 24 m installation cable plus 2x 3 m patch cord in the 2-connector channel (8.1 standard Class I with an operating frequency of up to 2 GHz)



CAT 8.1

CERTIFIED PATCH CABLES: 0.5 - 3.0 m
CERTIFIED LAYING CABLES: 25/50/100 m
& CERTIFIED KEYSTONE MODULE

Reliable performance of the network cable in CAT 8.1 channels is best ensured when combined with the specified GHMT-certified components.

The advertisement features a large "CAT 8.1" text in the upper left. To the right is a circular "GHMT TYPE APPROVAL" logo. Below the text are images of network components: a yellow cable with a 2-connector channel, a white patch cable with RJ45 connectors, and two grey keystone modules labeled "CAT 8".

02 CAT 8.1

SUSTAINABLE PACKAGING

FOR OUR PLANET AND OUR FUTURE

AVOIDING UNNECESSARY PLASTIC WASTE*

STURDY PAPER CABLE TIES

EACH SERIES ITEM EQUIPPED WITH PAPER LABEL



ECO-FRIENDLY
PACKAGING

* We do not use polybags or conventional plastic cable ties

03 OUTDOOR CABLES

ROBUST, WEATHERPROOF & UV-STABLE MATERIAL OUTDOOR CABLES

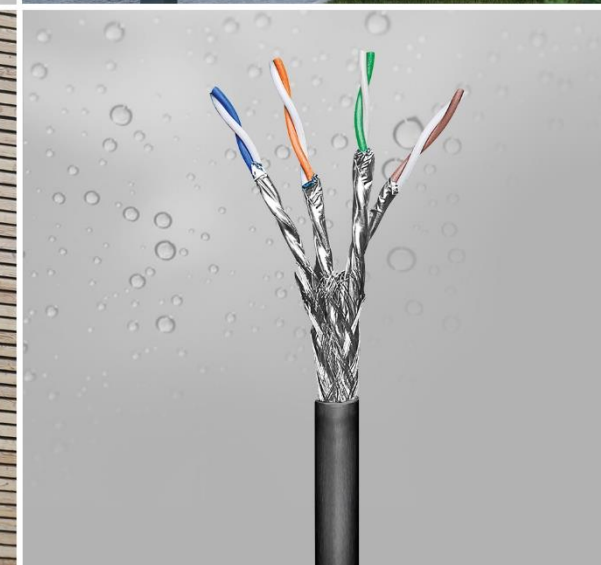
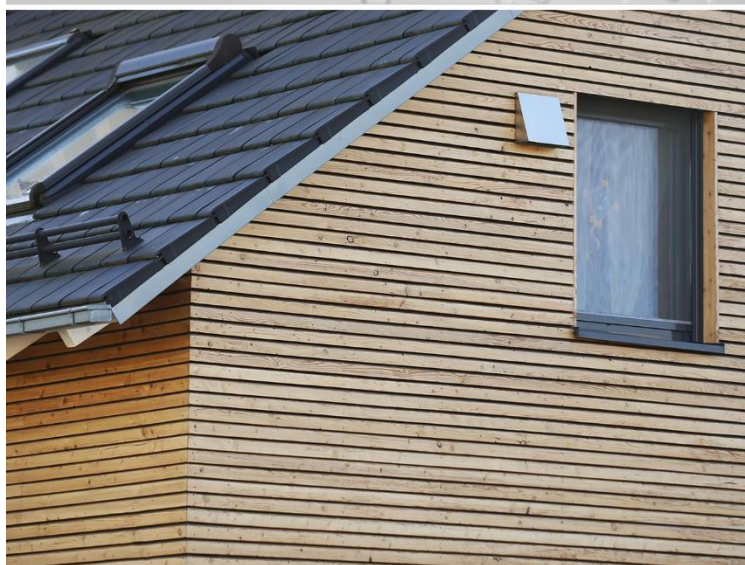
AVAILABLE AS CAT 5E, CAT 6 AND CAT 6A

SHIELDED OR UNSHIELDED

AS PATCH CABLES OR INSTALLATION CABLES

PERFECT FOR THE GARDEN, TERRACES,
BUILDING FACADES, CAMPING

gobay®



03 OUTDOOR CABLES

DUST & WATERPROOF MODULAR COUPLERS

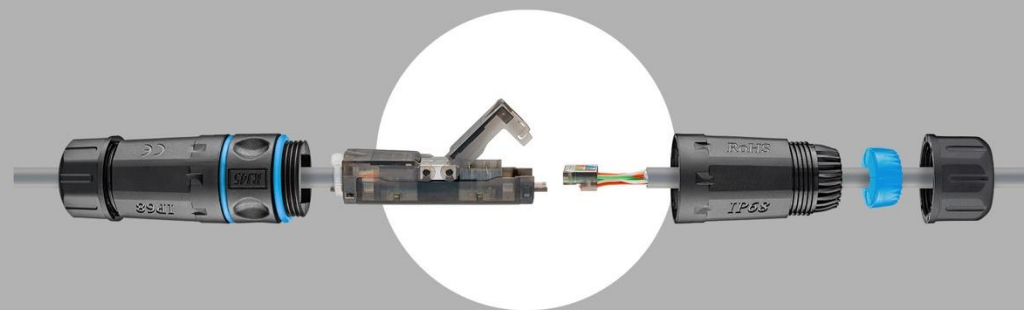
FOR CONNECTING OR COUPLING

FOR IDC* MOUNTING OR RJ45 CONNECTORS

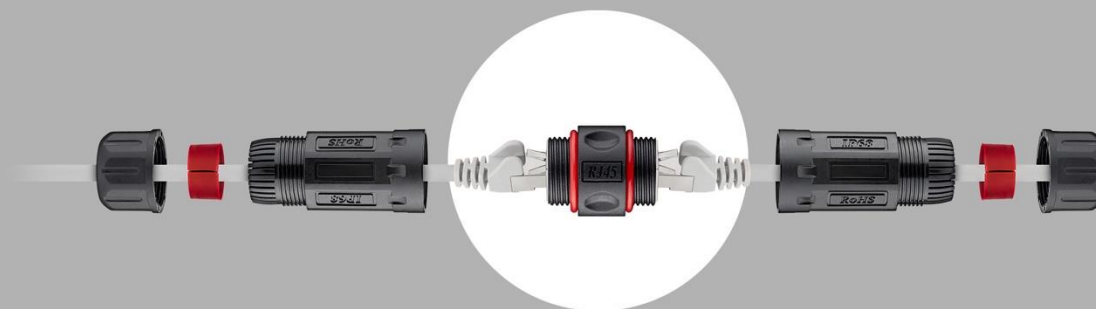
CAT 6 OR CAT 6A

SHIELDED OR UNSHIELDED

*INSULATION-DISPLACEMENT CONNECTOR



CONNECT



COUPLE

04 NETWORK INSTALLATION CABLES

UP TO 500 METRES LONG NETWORK INSTALLATION CABLES

90 ARTICLES

AVAILABLE AS CAT 5E, 6, 6A, 7, 7A, 7A+

SHIELDED AND UNSHIELDED

SOLID OR STRANDED INNER CONDUCTOR

PVC, PE OR LSZH

FROM OUTDOOR TO HALOGEN-FREE

LENGTHS IN M: 50, 100, 250, 305, 500



05 OPTICAL FIBRE CABLES

ULTRA-FAST OPTICAL FIBRE CABLES FTTx (FTTH FIBRE TO THE HOME)

DATA TRANSMISSION AT LIGHT SPEED

DESIGNED FOR THE OFFICE, INDUSTRY AND
DATA CENTRES

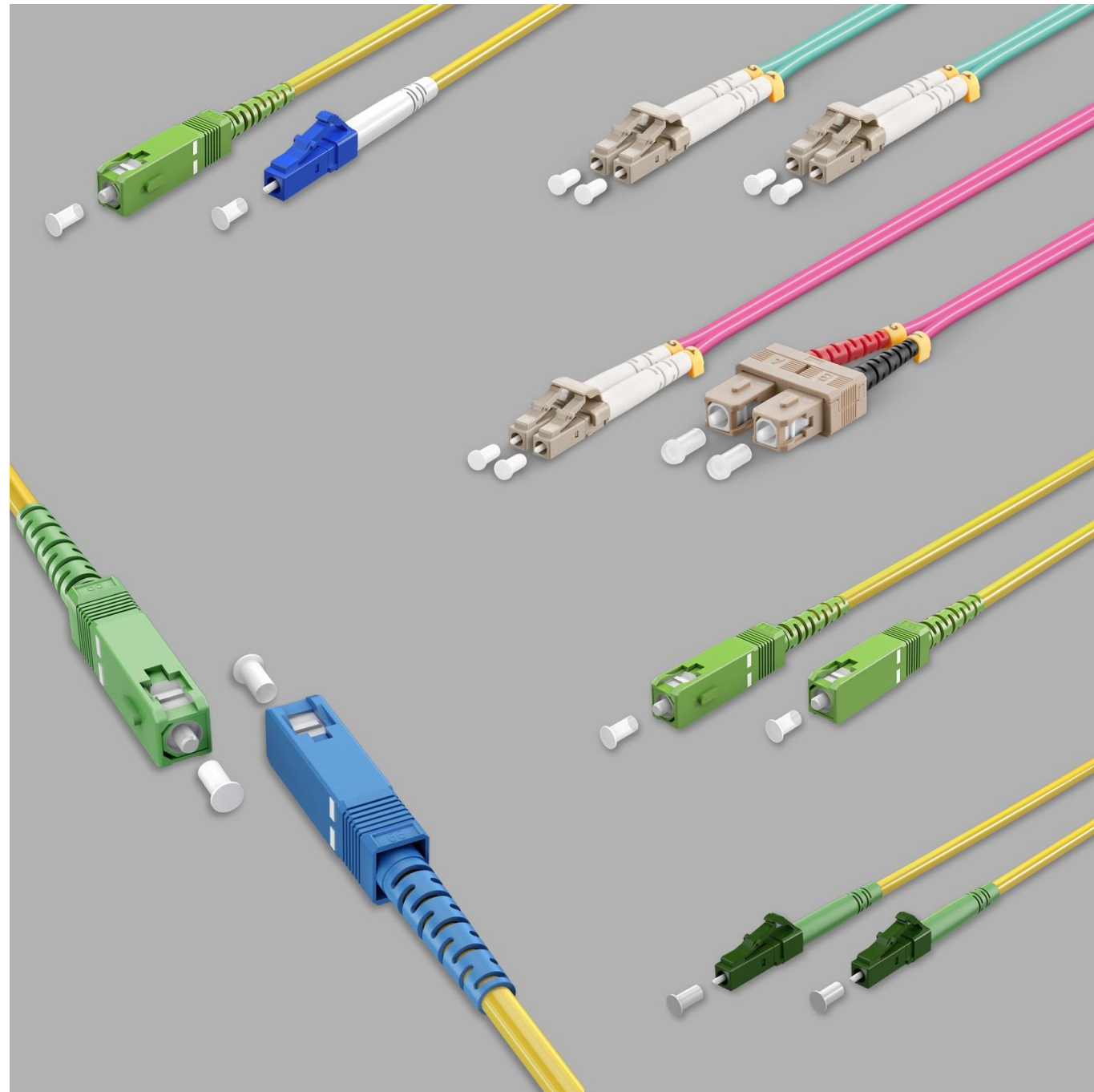
SIMPLEX SINGLE MODE, OS2 FIBERS

DUPLEX MULTIMODE, OM3 OR OM4 FIBERS

WIDE RANGE OF CONNECTOR AND
CABLE COMBINATIONS

LC/SC TYPES

LENGTHS IN M: 0.5-20



06 PATCH PANELS

FROM MINI TO MAXI PATCH PANELS

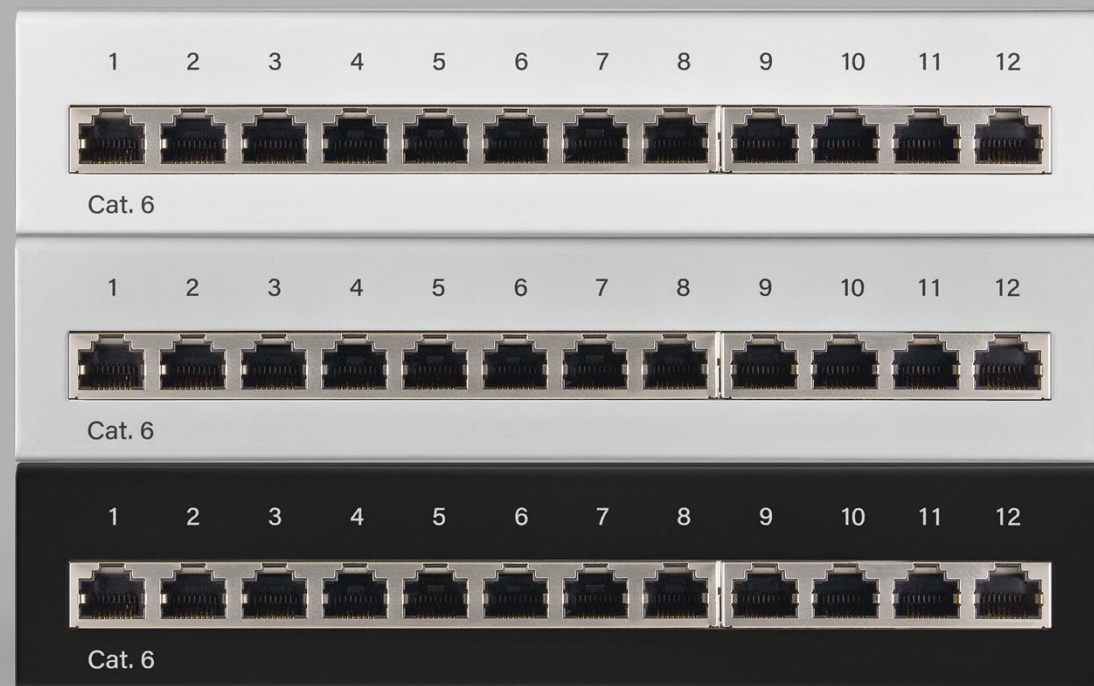
THE CONNECTING ELEMENT FOR CABLES

PANELS WITH 8/12/24 PORTS

10", 19" OR MINI (FOR DESKTOP MOUNTING)



20 PATCH PANEL TYPES



07 NETWORK SWITCHES

ENERGY-EFFICIENT NETWORK SWITCHES

THE CONTROL CENTRE FOR A WIRED
HOME NETWORK

EXPANDS THE NETWORK WITH ADDITIONAL
CONNECTION OPTIONS OF 10, 100 OR
1000 MBIT/S

WITH 5 TO 8 RJ45 PORTS



5 & 8 PORTS
FAST ETHERNET
& GIGABIT ETHERNET

08 KEYSTONES

INDIVIDUAL & UNIVERSAL KEYSTONES

VERSATILE: PLUG-IN CONNECTIONS CAN BE
COMBINED FREELY - JUST AS REQUIRED

SIMPLE SNAP-IN ASSEMBLY WITHOUT SOLDERING

MODULES FROM NETWORK TO USB TO ANTENNA



09 CABLE MANAGEMENT & PROTECTION

EASY & RELIABLE CABLE MANAGEMENT

FLEXIBLE SLOTS AND CLIPS

ORGANISE CABLES EASILY

AVOID DAMAGE TO CABLES

WITH 3M ADHESIVE SURFACE FOR LONG,
RELIABLE HOLD

CAN ALSO BE USED IN THE CAR



09 CABLE MANAGEMENT & PROTECTION

REMARKABLY SAFE CABLE PROTECTORS & MARKERS

DUST COVERS

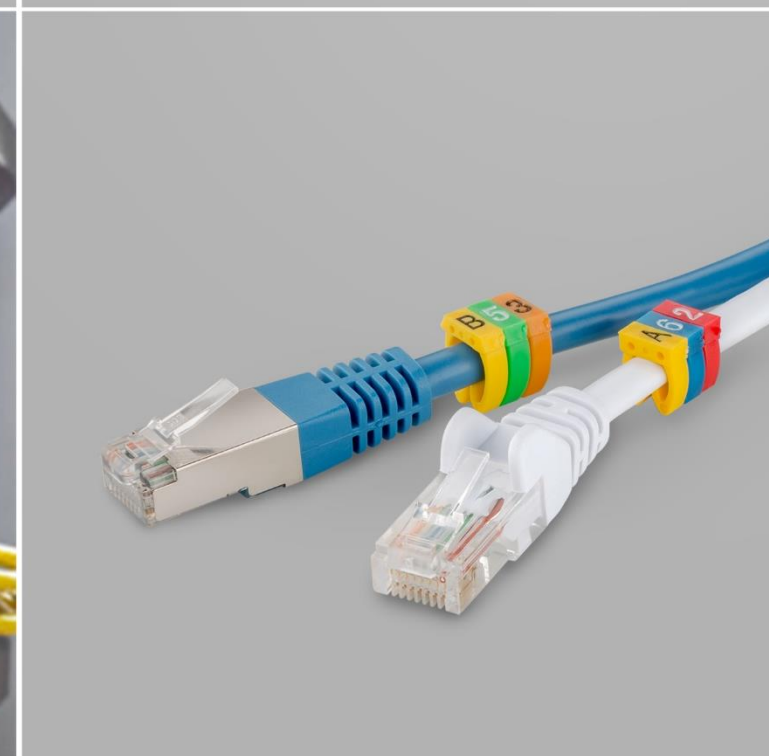
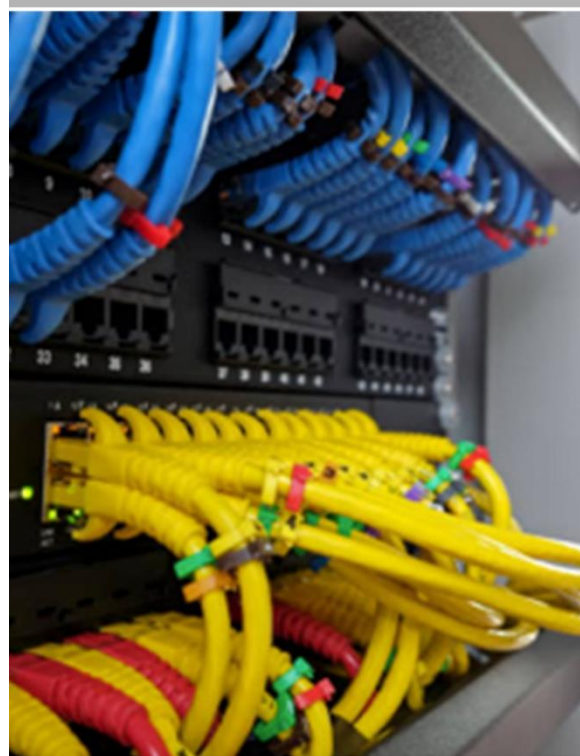
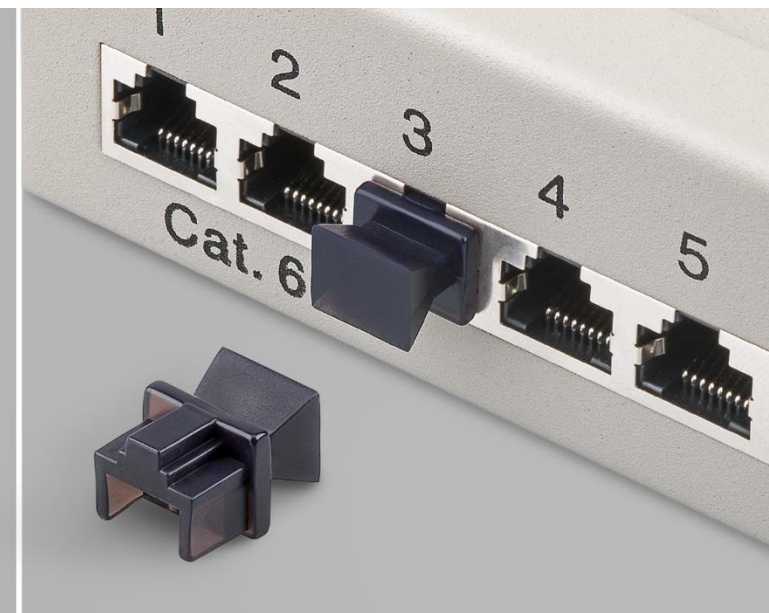
KEEP RJ45, ISDN, NETWORK OUTLET AND
PATCH PANEL CLEAN

LATCH & LUG PROTECTION

PREVENTS CABLE SNAGGING AND BREAKAGE
OF LATCH LEVER AND LUG

CLIP-ON CABLE MARKER

WITH NUMBERS (0 TO 9) OR LETTERS (A, B, C)
FOR CABLE DIAMETERS FROM 2.5 - 6 MM²



10 INSTALLATION ACCESSORIES

EXTREMELY HANDY ACCESSORIES FOR THE INSTALLATION

A LARGE SELECTION OF

WALL PLATES

CONNECTORS

HUBS

SOCKETS

TOOLS

MEASUREMENT DEVICES





ALWAYS THERE FOR YOU

CONTACT

Wentronic GmbH
Pillmannstraße 12
38112 Braunschweig

Phone: +49 531 21058 - 0
Fax: +49 531 21058 - 22
office@wentronic.com

Product and packaging illustrations similar.
Errors and omissions excepted.

© 2025 Wentronic GmbH

