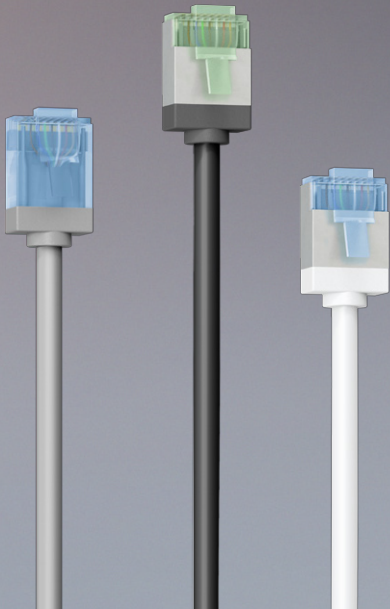


PRODUCT NEWS

wentronic

07 / 2024



USB-C™ Cable, USB4™ Version 2.0, Power Delivery

USB-C™ plug > USB-C™ plug



Feature

The cable supports ultra-high resolutions of up to 16K @ 60 Hz/ 4K @ 120 Hz on single monitors and when splitting the signal to two monitors via a hub, once 8K and once 4K @ 60 Hz

Unrivalled 80 Gbit/s ensures lightning-fast data transfer - making the USB-C™ cable 16x faster than USB 3.0 and perfect for NVMe hard drives, HD films, series, music and photos

Top performance thanks to asymmetrical data transfer, supported by Windows 11 (Build 23615): USB4™ Gen 4 enables downstream rates of 120 Gbit/s with simultaneous upstream rates of 40 Gbit/s

With 240 W thanks to Power Delivery (EPR), the USB cable is a strong power supply for high-performance laptops, docking stations and other energy-intensive multimedia devices

Perfect for streaming HD video to external monitors, TVs or projectors, e.g. from smartphones, notebooks, tablets and other host devices

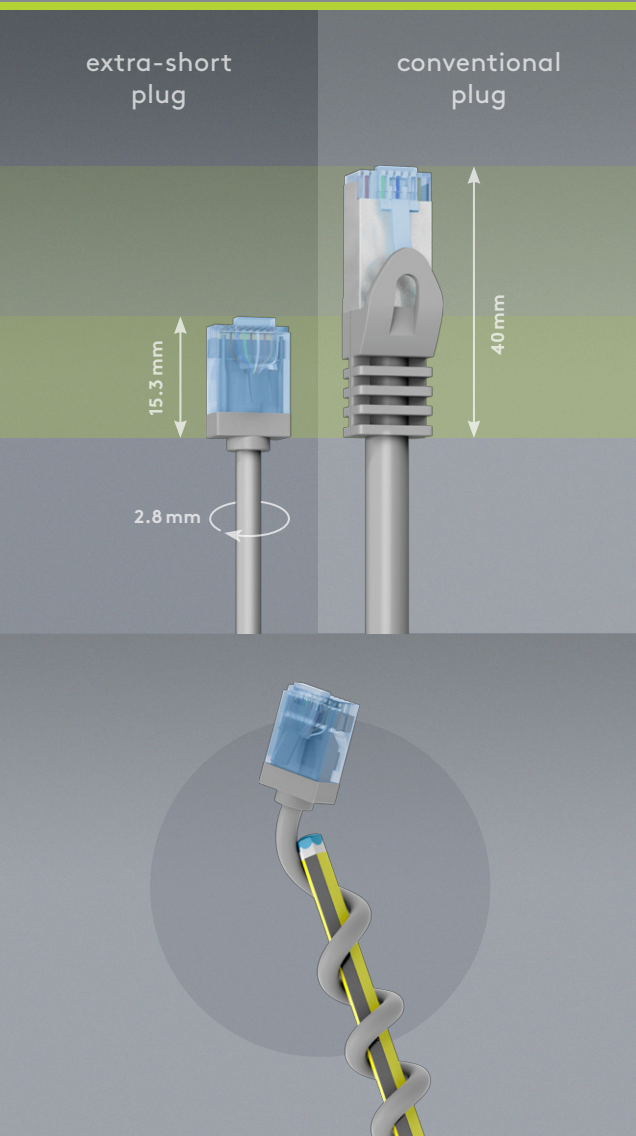
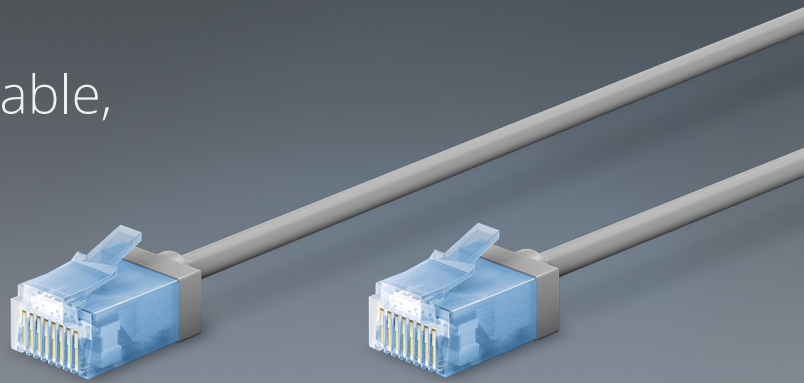
The most flexible USB cable to date: Enables data tunnelling from DisplayPort™ 2.1 and PCIe™ 4.0 and can be connected directly to ports with Thunderbolt™ 4 or Thunderbolt 3™

USB4™ is compatible with high-end gaming components, e.g. the Razer Blade 18, Corsair Voyager, Apple Studio Display or AMD Ryzen processors (Zen 3+, Zen 5)

Availability	Cable length	Item no.	EAN	RRP
● exp. from WEEK 27	1.20 m	74376	4040849743764	34.99 €

Ultra-Flexible CAT 6A Patch Cable, Slim, U/UTP

extra-short plugs, pure copper conductor (CU),
LSZH, TPE jacket, AWG 32



Feature

Super-thin LAN cable with extra-short RJ45 connectors for a reduced cable volume in the server cabinet or patch panel, resulting in optimised air circulation

Safe and flexible: Unshielded and with a low-smoke, halogen-free TPE jacket for a particularly small bending radius and high flexibility

With AWG 32 and an outer diameter of mm, the cable is ultra-slim but just as powerful as a standard CAT cable

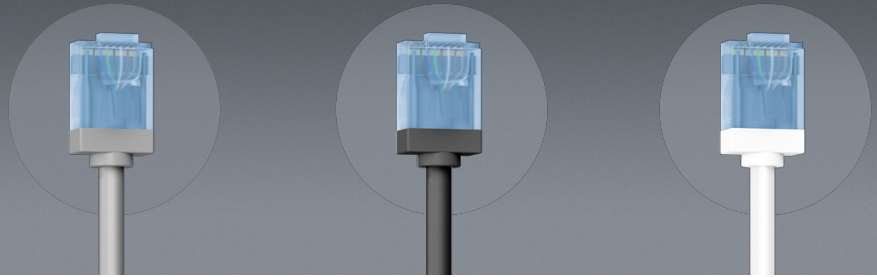
The CAT 6A network cable is perfect for fast connections such as 10 Gigabit Ethernet 10GBASE-T, 100BASE-TX, 1000BASE-T and 10/100/1000/10000 Mbit/s

The RJ45 cable is suitable for Power over Ethernet (PoE, PoE+) and CAT 6A-tested (supplied with individual measurement protocol)

High-quality copper conductor (CU) and gold-plated plug contacts ensure low transmission resistance and prevent corrosion

The compact bend protection effectively prevents cable breakage and ensures a long service life for the Ethernet cable

CAT 6A

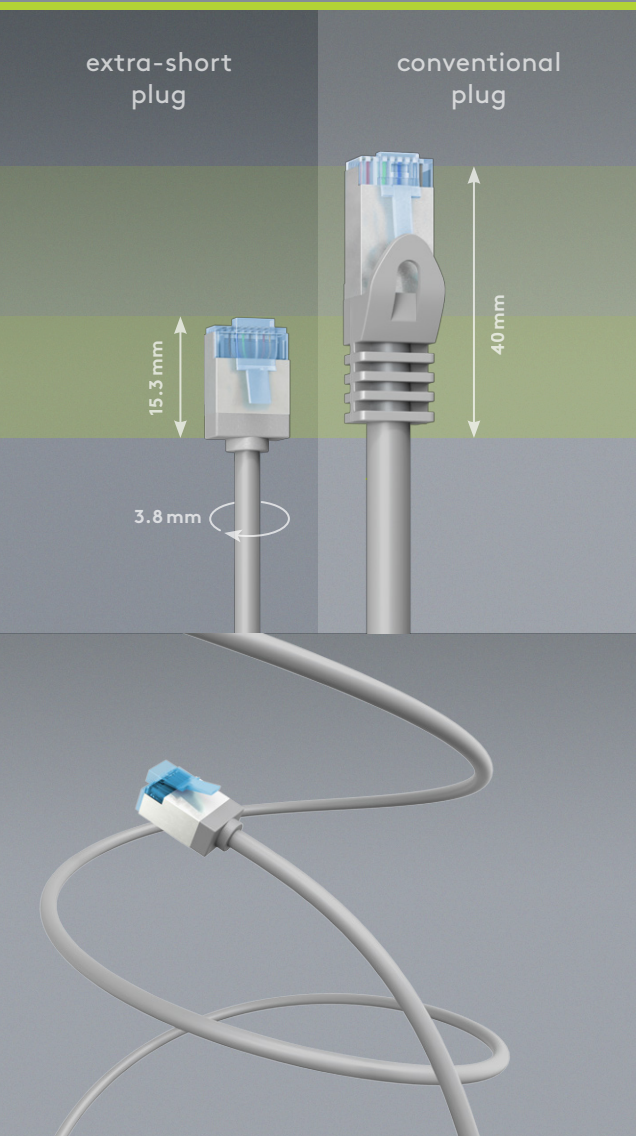
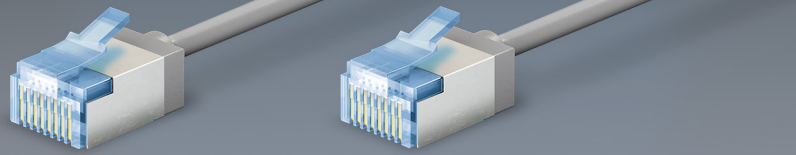


Availability	Cable length	RRP	Grey		Black		White	
			Item no.	EAN	Item no.	EAN	Item no.	EAN
● exp. from WEEK 33	0.15 m	1.49 €	74219	4040849742194	74230	4040849742309	74244	4040849742446
● exp. from WEEK 33	0.25 m	1.79 €	74220	4040849742200	74231	4040849742316	74284	4040849742842
● exp. from WEEK 33	0.50 m	1.99 €	74221	4040849742217	74232	4040849742323	74285	4040849742859
● exp. from WEEK 33	1.00 m	2.49 €	74222	4040849742224	74233	4040849742330	74286	4040849742866
● exp. from WEEK 33	2.00 m	3.49 €	74223	4040849742231	74234	4040849742347	74287	4040849742873
● exp. from WEEK 33	3.00 m	4.49 €	74224	4040849742248	74238	4040849742385	74288	4040849742880
● exp. from WEEK 33	5.00 m	5.99 €	74225	4040849742255	74239	4040849742392	74299	4040849742996
● exp. from WEEK 33	7.50 m	7.99 €	74226	4040849742262	74240	4040849742408	74300	4040849743009
● exp. from WEEK 33	10.00 m	9.99 €	74227	4040849742279	74241	4040849742415	74301	4040849743016
● exp. from WEEK 33	15.00 m	13.99 €	74228	4040849742286	74242	4040849742422	74302	4040849743023

Cable length	Pcs./master carton	Pcs./PU	Length	Width	Height	Weight
0.15 m	500	1	15.00 cm	1.20 cm	1.30 cm	0.008 kg
0.25 m	500	1	25.00 cm	1.20 cm	1.30 cm	0.009 kg
0.50 m	500	1	12.00 cm	10.50 cm	1.20 cm	0.011 kg
1.00 m	400	1	13.00 cm	10.00 cm	1.20 cm	0.016 kg
2.00 m	250	1	14.00 cm	13.00 cm	1.20 cm	0.025 kg
3.00 m	200	1	14.00 cm	13.00 cm	1.20 cm	0.035 kg
5.00 m	120	1	14.00 cm	13.00 cm	1.20 cm	0.054 kg
7.50 m	100	1	14.00 cm	13.00 cm	1.50 cm	0.077 kg
10.00 m	85	1	13.00 cm	12.00 cm	1.80 cm	0.101 kg
15.00 m	60	1	14.00 cm	13.00 cm	2.30 cm	0.148 kg

Ultra-Flexible CAT 6A Patch Cable, Slim, U/FTP

extra-short plugs, pure copper conductor (CU),
LSZH, TPE jacket, AWG 32



Feature

Super-thin LAN cable with extra-short RJ45 connectors for a reduced cable volume in the server cabinet or patch panel, resulting in optimised air circulation

Safe and flexible: Without twisted pair shielding and with a low-smoke, halogen-free TPE jacket for a particularly small bending radius and high flexibility

With AWG 32 and an outer diameter of 3.8 mm, the cable is ultra-slim but just as powerful as a standard CAT cable

The CAT 6A network cable is perfect for fast connections such as 10 Gigabit Ethernet 10GBASE-T, 100BASE-TX, 1000BASE-T and 10/100/1000/10000 Mbit/s

The RJ45 cable is suitable for Power over Ethernet (PoE, PoE+) and CAT 6A-tested (supplied with individual measurement protocol)

High-quality copper conductor (CU) and gold-plated plug contacts ensure low transmission resistance and prevent corrosion

The compact bend protection effectively prevents cable breakage and ensures a long service life for the Ethernet cable

CAT 6A

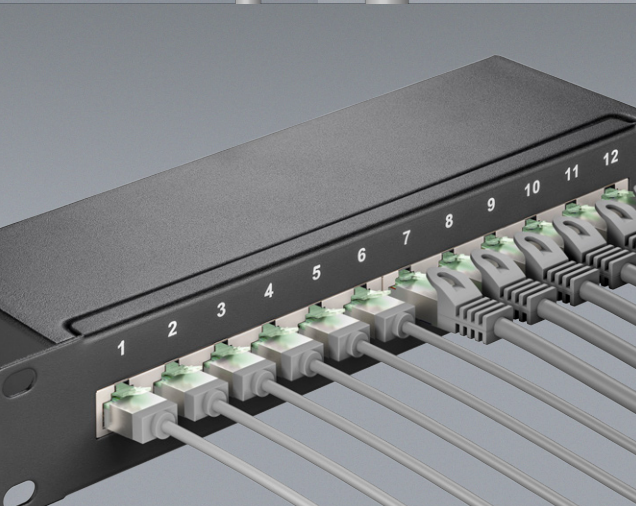
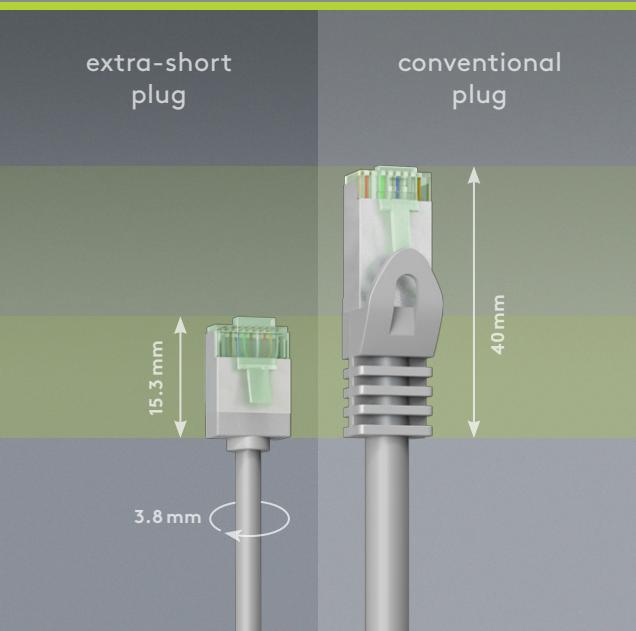
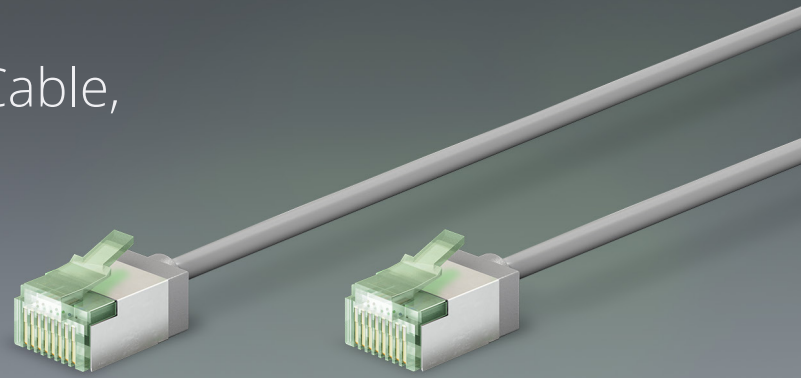


Availability	Cable length	RRP	Grey		Black		White	
			Item no.	EAN	Item no.	EAN	Item no.	EAN
● exp. from WEEK 33	0.15 m	2.49 €	74304	4040849743047	74315	4040849743153	74326	4040849743269
● exp. from WEEK 33	0.25 m	2.79 €	74305	4040849743054	74316	4040849743160	74327	4040849743276
● exp. from WEEK 33	0.50 m	2.99 €	74306	4040849743061	74317	4040849743177	74328	4040849743283
● exp. from WEEK 33	1.00 m	3.49 €	74307	4040849743078	74318	4040849743184	74332	4040849743320
● exp. from WEEK 33	2.00 m	4.49 €	74308	4040849743085	74319	4040849743191	74336	4040849743368
● exp. from WEEK 33	3.00 m	5.49 €	74309	4040849743092	74320	4040849743207	74337	4040849743375
● exp. from WEEK 33	5.00 m	6.99 €	74310	4040849743108	74321	4040849743214	74338	4040849743382
● exp. from WEEK 33	7.50 m	8.99 €	74311	4040849743115	74322	4040849743221	74339	4040849743399
● exp. from WEEK 33	10.00 m	10.99 €	74312	4040849743122	74323	4040849743238	74340	4040849743405
● exp. from WEEK 33	15.00 m	14.99 €	74313	4040849743139	74324	4040849743245	74341	4040849743412

Cable length	Pcs./master carton	Pcs./PU	Length	Width	Height	Weight
0.15 m	500	1	15.00 cm	1.20 cm	1.30 cm	0.008 kg
0.25 m	500	1	25.00 cm	1.20 cm	1.30 cm	0.010 kg
0.50 m	400	1	12.00 cm	10.50 cm	1.20 cm	0.013 kg
1.00 m	400	1	13.00 cm	10.00 cm	1.20 cm	0.019 kg
2.00 m	180	1	14.00 cm	13.00 cm	1.20 cm	0.031 kg
3.00 m	150	1	13.50 cm	12.50 cm	1.20 cm	0.043 kg
5.00 m	100	1	14.00 cm	13.00 cm	1.50 cm	0.069 kg
7.50 m	80	1	14.00 cm	13.00 cm	2.00 cm	0.099 kg
10.00 m	60	1	14.00 cm	13.00 cm	2.50 cm	0.131 kg
15.00 m	45	1	15.00 cm	14.00 cm	3.20 cm	0.191 kg

Ultra-Flexible CAT 8.1 Patch Cable, Slim, U/FTP

extra-short plugs, 99.9 % oxygen-free copper conductor (OFC), LSZH, TPE sheath, AWG 32



Feature

Super-thin LAN cable with extra-short RJ45 connectors for a reduced cable volume in the server cabinet or patch panel, resulting in optimised air circulation

Safe and flexible: Without twisted pair shielding and with a low-smoke, halogen-free TPE jacket for a particularly small bending radius and high flexibility

With AWG 32 and an outer diameter of 3.8 mm, the cable is ultra-slim but just as powerful as a standard CAT cable

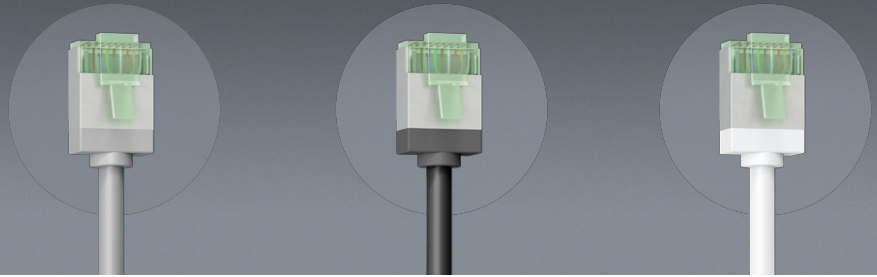
The high-speed network cable is perfect for Ethernet networks with 25/40GBASE-T (40 Gigabit-capable) and backwards compatible with 10BASE-T, 100BASE-TX, 1000BASE-T 10GBASE-T and 10/100/1000/10000 Mbit/s

With a transmission bandwidth of up to 2 GHz (2,000 MHz), the Ethernet cable has 4 times the bandwidth of CAT 6A cables

The RJ45 cable is suitable for Power over Ethernet (PoE, PoE+, UPoE, 4PPoE) and HDBaseT

The compact bend protection effectively prevents cable breakage and ensures a long service life for the Ethernet cable

CAT 8.1



Availability	Cable length	RRP	Grey		Black		White	
			Item no.	EAN	Item no.	EAN	Item no.	EAN
● exp. from WEEK 33	0.15 m	3.99 €	74343	4040849743436	74350	4040849743504	74357	4040849743573
● exp. from WEEK 33	0.25 m	4.49 €	74344	4040849743443	74351	4040849743511	74358	4040849743580
● exp. from WEEK 33	0.50 m	4.99 €	74345	4040849743450	74352	4040849743528	74359	4040849743597
● exp. from WEEK 33	1.00 m	5.99 €	74346	4040849743467	74353	4040849743535	74360	4040849743603
● exp. from WEEK 33	2.00 m	6.99 €	74347	4040849743474	74354	4040849743542	74361	4040849743610
● exp. from WEEK 33	3.00 m	7.99 €	74348	4040849743481	74355	4040849743559	74362	4040849743627
● exp. from WEEK 33	5.00 m	9.99 €	74349	4040849743498	74356	4040849743566	74363	4040849743634

Cable length	Pcs./master carton	Pcs./PU	Length	Width	Height	Weight
0.15 m	500	1	15.00 cm	1.20 cm	1.30 cm	0.008 kg
0.25 m	500	1	25.00 cm	1.20 cm	1.30 cm	0.010 kg
0.50 m	400	1	12.00 cm	10.50 cm	1.20 cm	0.013 kg
1.00 m	400	1	13.00 cm	10.00 cm	1.20 cm	0.019 kg
2.00 m	180	1	14.00 cm	13.00 cm	1.20 cm	0.031 kg
3.00 m	150	1	13.50 cm	12.50 cm	1.20 cm	0.043 kg
5.00 m	100	1	14.00 cm	13.00 cm	1.50 cm	0.069 kg

Digital Timer

programmable timer with safety connectors (Type F)



Feature

Digital timer for the mains socket to switch electrical household appliances on and off to the minute

The timer plug saves up to 10 different, to-the-minute settings and has 16 predefined weekday combinations for complex programme settings

Easy to operate thanks to the large, easy-to-read screen (4.8 x 3.8 cm), 8 buttons, status LED, 24-hour time format and included reset tool

Includes a mode for random time intervals that simulate presence in the home when connected to the lighting, contributing to burglary prevention

Effectively reduces the power consumption by interrupting the stand-by mode of connected devices such as televisions and appliances

Permanently installed emergency battery (NiMH) to save programmes for more than 100 days when the plug timer is disconnected from the power supply

Timer plug is suitable for indoor use (protection class IP20), max. load 3680 W at 230 V (AC) and 16 A



Availability		Item no.	EAN	RRP	Previous	Pcs./master carton	Pcs./PU	Length	Width	Height	Weight
● available	Set of 1	64900	4040849649004	16.99 €	51277	50	1	14.50 cm	8.50 cm	6.50 cm	0.218 kg
● exp. from WEEK 34	Set of 2	64901	4040849649011	22.99 €	55543	24	1	14.50 cm	12.50 cm	6.50 cm	0.380 kg
● exp. from WEEK 34	Set of 3	64902	404084964902	31.99 €	55544	18	1	16.00 cm	6.50 cm	14.50 cm	0.543 kg

5 V Power Supply (5 W / 1.0 A)

with 5.5 mm x 2.1 mm DC plug



Feature

Plug-in power supply unit with fixed voltage, perfect as a replacement unit for electrical appliances such as a TV box, router, LED strip, video camera, digital picture frame, dartboard, baby monitor or toys

Easy to connect and whisper-quiet during use, for stabilised direct current with 5 V at up to 1 A

The high energy conversion efficiency maintains a low operating temperature and ensures a long service life of the DC power supply unit

Especially eco-friendly and energy-efficient thanks to its low stand-by consumption

Thanks to the wide-range input from 100 V to 240 V, the power supply unit (Europlug Type C, CEE 7/16) is suitable for use worldwide

Fuses in the switching power supply protect the device against short-circuit, overload, overvoltage and overcurrent

Equipped with a useful LED operation indicator, cable length 1.8 m

Availability	Item no.	EAN	RRP	Previous	Pcs./master carton	Pcs./PU	Length	Width	Height	Weight
● exp. from WEEK 31	64982	4040849649820	9.99 €	54805	50	1	9.00 cm	5.50 cm	7.70 cm	0.103 kg

12 V Power Supply (36 W / 3.0 A)

with 5.5 mm x 2.1 mm DC plug |
with 5.5 mm x 2.5 mm DC plug



Feature

Plug-in power supply unit with fixed voltage, perfect as a replacement unit for electrical appliances such as a TV box, router, LED strip, video camera, digital picture frame, dartboard, baby monitor or toys

Easy to connect and whisper-quiet during use, for stabilised direct current with 12 V at up to 3 A

The high energy conversion efficiency maintains a low operating temperature and ensures a long service life of the DC power supply unit

Especially eco-friendly and energy-efficient thanks to its low stand-by consumption

Thanks to the wide-range input from 100 V to 240 V, the power supply unit (Europlug Type C, CEE 7/16) is suitable for use worldwide

Fuses in the switching power supply protect the device against short-circuit, overload, overvoltage and overcurrent

Equipped with a useful LED operation indicator, cable length 1.8 m

Availability	with DC plug	Item no.	EAN	RRP	Previous	Pcs./master carton	Pcs./PU	Length	Width	Height	Weight
● exp. from WEEK 31	5.5 mm x 2.1 mm	64980	4040849649806	24.99 €	-	50	1	15.50 cm	6.50 cm	7.50 cm	0.228 kg
● exp. from WEEK 31	5.5 mm x 2.5 mm	64981	4040849649813	24.99 €	54782	50	1	15.50 cm	6.50 cm	7.50 cm	0.228 kg